

# USER AND TECHNICAL MANUAL HYDRA+



Epelsa scale control program

## 0. CONTENTS

<b><u>0. CONTENTS .....</u></b>	<b><u>2</u></b>
<b><u>1. BASIC CONCEPTS .....</u></b>	<b><u>4</u></b>
1.1 STORE .....	4
1.2 MODEL OF SECTIONS OR COUNTERS .....	4
1.3 ARTICLES .....	5
1.4 CONCEPT OF ARTICLE CODE .....	6
1.5 ARTICLE CREATION IN SCALE SYSTEM .....	6
1.6 CONCEPT OF SUBSECTIONS AND FAMILIES .....	7
1.7 CONCEPT OF COUNTER AND MACHINE SECTION.....	8
<b><u>2. COMMUNICATIONS CONFIGURATION .....</u></b>	<b><u>8</u></b>
2.1 CONFIGURATION TO WORK WITH EUROSCALE, MERCURIO OR JUPITER. ....	9
2.2 CONFIGURATION TO W ORK WITH MARTE V4 IC - ILC .....	11
2.3 COMMUNICATION VIA MODEM .....	12
2.4 COMMUNICATION VIA REMOTE WATEWAY .....	14
2.5 NET- ID. EUROSCALE SYSTEMS DIVIDED IN SUBSYSTEMS.....	14
<b><u>3. OPERATIONAL AND FEATURES .....</u></b>	<b><u>16</u></b>
3.1 GENERAL USE OF STORE INSTERT DATA FORMS .....	16
3.2 CREATION OF STORE STRUCTURE .....	18
3.3 VAT TYPES CONFIGURATION WITH HYDRA+ .....	21
3.4 TARA TYPES CONFIGURATION WITH HYDRA+ .....	22
3.5 ARTICLES CONFIGURATION .....	23
3.6 PRICE CONFIGURATION BY STEPS IN EUROSCALE- MERCURIO OR JUPITER.....	25
3.7 BARCODES CONFIGURATION WITH HYDRA+ .....	26
3.8 HEADERS AND LEGENDS.....	27
3.9 TEXTS OF ADVERTISINGS AND PROMOTIONS WITH HYDRA+ .....	28
3.10 CONSULTATION AND GENERTION OF ARTICLE FILES WITH HYDRA+ .....	28
3.11 EXPORT TO FILE.....	29
3.12 FUNCTON OF STORE STRUCTURE ABSORPTION .....	29
3.13 WORK IN CONTINUOUS MODE.....	30
<b><u>4. LINKS .....</u></b>	<b><u>31</u></b>
4.1 DATA IMPORT OPTIONS.....	31
4.2 CONFIGURABLE ARTCLE IMPORT.....	31
4.3 ARTICLE IMPORT USING FILTERS.....	35
4.4 FIX IMPORT OF BOVINE TABS .....	36
4.5 TOTAL EXPORT WITH HYDRA+.....	37
4.6 END OF DAY PROCESS .....	44
4.7 ASCII LINK .....	45
<b><u>5. FREE COMMANDS.....</u></b>	<b><u>48</u></b>

<b><u>6. COMMAND LINE .....</u></b>	<b><u>49</u></b>
6.1 EXECUTABLE COP5.EXE AND BAT FILES OF AUTOMATION .....	49
6.2 MODIFICATION OF HYDRA+ PARAMETER LINE.....	50
6.3 HYDRA+ DEFAULT PARAMETER LIST .....	51
<b><u>7. SECURITY .....</u></b>	<b><u>52</u></b>
7.1 USERS .....	52
7.2 PASSWORDS AND NAMES.....	52
7.3 SECURITY CONFIGURATION .....	52
7.4 WOKR IN SAFETY USER MODE .....	54
<b><u>8. DATA BASES .....</u></b>	<b><u>54</u></b>
8.1 TOTALS.....	54
8.2 ARTICLES .....	58
8.3 STRUCTURE.....	60
<b><u>9. SUMMARY OF CONFIGURATION OPTIONS AND THEIR USE ACCORING TO TO SCALE TYPE .....</u></b>	<b><u>61</u></b>
9.1 GENERAL OPTIONS (ALL MODELS).....	61
9.2 OPTIONS ONLY FOR EUROSCALE, MERCURIO OR JUPITER RANGE .....	61
9.3 OPTIONS ONLY FOR V8 AND MARTE RANGE .....	62
9.4 OPTIONS ONLY FOR IV4 AND ECOPRINT RANGE.....	62
9.5 OPTIONS LIMITED TO CERTAIN TYPES OF SCALES .....	62
<b><u>10. INSTALLATION OPTIONS.....</u></b>	<b><u>63</u></b>
ANNEX 1. STEP MULTISTORE -- MONOSTORE .....	63
ANNEX 2. COMMON PROBLEMS .....	64
ANNEX 3. COMMON PROBLEMS IN EUROSCALE THROUGH TCP/IP.....	65
ANNEX 4. TYPICAL CONFIGURATIONS.....	66

## 1. Basic Concepts

### 1.1 Store

The term "Store" in Hydra+ is a scale system in which we have a network of scales installed in a store, self-service store, supermarket or hypermarket, and this network of scales is sharing article data, sales, etc.

[Start](#)

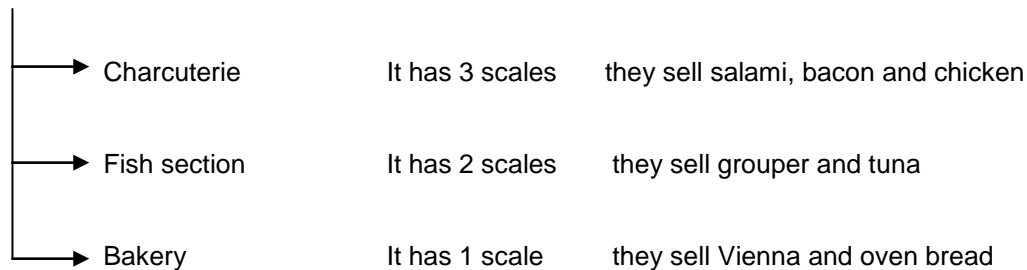
### 1.2 Section or Counter model

Through this document we will use without distinction the words Section or Counter. Both words are used without distinction in the store management programs.

The section or counter is a division of the store in groups that have common characteristics. This division affects both Articles to be sold on it and also Scales, which are grouped into sections. A store such as a self-service can have articles belonging to the bakery, other articles belonging to fish section, etc. At the same time, these groups or sections of articles will be sold in scales from the bakery, from fish section, etc.

Therefore, the section or counter affects as well as the article organisation as the scale organisation.

"Self-Service MyCasa"



In this example we can see that, there are articles of interest to only those who sell them, and that it is interesting to see sales or packaging results differentiated on groups:

Section 1	Scales 1,2 and 3	They sell article 1: Salami, 2 : Bacon, 3: Chicken
Section 2	Scales 4 and 5	They sell article 1: Grouper, 2: Tuna
Section 3	Scale 6	They sell article 1: Vienna, 2: Oven bred

We remark here these questions:

- The scale number is unique in the whole store (there cannot be two scales with number 2 , for example)
- We have a number for articles that is unique in the section, this number is called PLU .

#### Section 1

PLU 1 : Salami  
 PLU 2: Bacon  
 PLU 3: Chicken

#### Section 2

PLU 1 : Grouper  
 PLU 2 : Tuna

#### Section 3

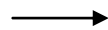
PLU 1: Viena  
 PLU 2: Oven bred

- Each scale is associated to a counter, that fixed which articles are available (charcuterie articles, bakery articles or fish section articles)

In summary:



SCALE



ASSOCIATED TO A COUNTER



SELLS ARTICLES  
 THAT BELONG TO  
 COUNTER

[Start](#)

### 1.3 Articles

They have a number of properties that identify them and are of interest, like price, tare, expiry, weight, etc.

In order to be identified, articles must have a unique key that is not repeated throughout the store, this unique key is determined by SECTION + PLU

Charcuterie

Sec. 1 PLU 1 : Salami  
 Sec. 1 PLU 2 : Bacon  
 Sec. 1 PLU 3 : Chicken

Fish section

Sec. 2 PLU 1 :Hake  
 Sec. 2 PLU 2 : Grouper  
 Sec. 2 PLU 3 : Tuna

Bakery

Sec 3 PLU 1 : Viena  
 Sec.3 PLU 2 : Oven bred

[Start](#)**1.4 Concept of article code**

While we noted that Section + PLU determine unequivocally each article, in practice we will also have another number, called code, which is a unique identifier throughout the store:

- PLU : Unique in each section
- CODE : Unique in the whole store

As we have seen, we can have two articles with the same PLU but differentiated, because they belong to different sections.

- Grouper : PLU1 → Section 2
- Salami : PLU 1 → Section 1
- Viena : PLU 1 → Section 3

Nevertheless, the code is unique. There cannot be two articles with the same code throughout the store:

- Salami → Code 1
- Bacon → Code 2
- Chicken → Code 3
- Grouper → Code 4
- Tuna → Code 5
- Viena → Code 6
- Oven bred → Code 7

With two article identifiers, code in one hand and section + PLU in the other hand, we have many uses, here some examples:

- 1) Fixing a generic code for several stores
- 2) Generate a unique bar code for each article
- 3) Stock management
- 4) The concept of code gives more flexibility

Suppose that the fruit seller is close to the grocer, each of them have a scale and want to use both interchangeably.

If one scale is assigned to fruit section and the other to grocery section, their PLUS do not match and could not work, but working in code mode, the code is unique for the whole store, and accessible from both scales.

[Start](#)**1.5 Article creation in scale system**

By article creation, the article has to receive 3 basic and inalterable properties (that is to say, the article had to be deleted, before we could modify one of these properties).

- CODE : ABSOLUT IDENTIFY NUMBER
- SECTION : PRODUCT TYPE
- PLU : UNIQUE IDENTIFY NUMBER IN THE SECTION

By article creation Hydra+ allows:

- a) To indicate Code, Section and PLU
- b) To indicate only Code and Section. In this case the program creates automatic a PLU paying attention to the free PLUS in the section.

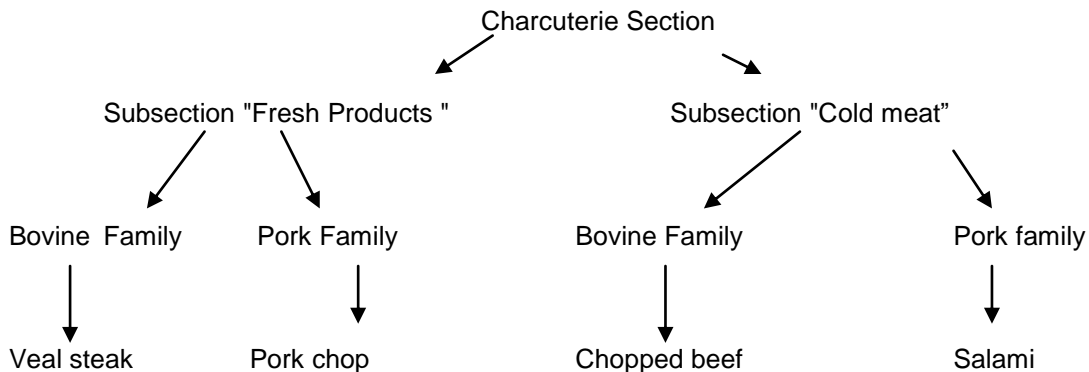
\*NOTE: Indicate only Section and PLU is wrong.

[Start](#)

## 1.6 Familie and Subsection concept

(This concept relates only to the article properties, not to the scale properties)

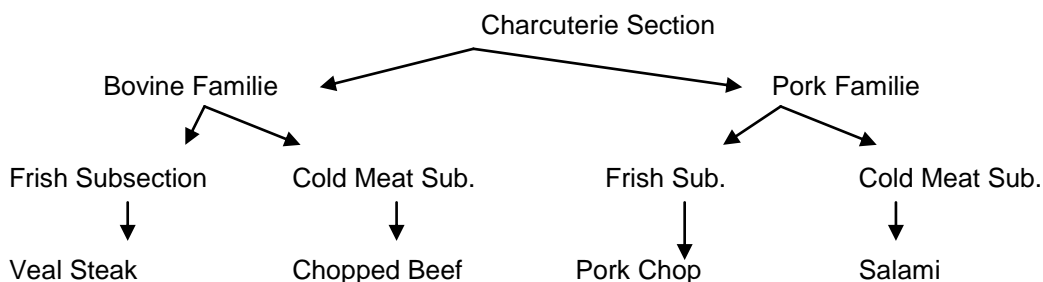
Complex management systems with large volumes of articles and sales may require subdivisions within sections, for more clarity in data organization. A first approximation would be:



At first glance, we have a hierarchical structure. However, this is not the case:

- Rarely are used both sub-levels, one organization level is mostly enough (subsections or families).
- The used level can be either family or subsection.
- Hydra+ treats families and subsections as article properties (such as tare or price), without building of hierarchical structures.
- The hierarchical structure is not "tight", that is to say, the example shows that in both, subsection "Fresh Products", as in subsection "Cold Meat", are families with common properties : "Bovine", "Pork"

Therefore, fall to customer management, considering subsections and families in a more or less hierarchical way with more or fewer sublevels, Hydra+ gives freedom to do it in one way or another. Note that the example could be reversed:



It is always recommended when only one sublevel is used, to use always FAMILY concept instead of SUBSECTION concept, being that all scales are designed to work with families and don't "understand" subsection which is an organization level added by Hydra + for facilitate the management, so:

- 1) Special data (for example bovine tracking) are directed to families.
- 2) If you need to restore scale data, you can restore family data, but not always subsection data (depending on models). This is not important if your management system has the ability to send bulk data, but, you could have a problem, if you depend only from scales to restore system failures.

[Start](#)

## 1.7 Counter and Machine Section Concept

**Counter or Management Section:** Respecting Hydra+, it is with which we will work for inserting or modifying data, for seeing total data, etc.

**Machine Section:** It is section number which scales understand and which is indicated to each scale by its configuration.

**If your management system has no special needs:** You can work by the easiest way. For you, counter number and machine section number will be the same.

However, it can happen, that the available counter numbers are not adapted to your management organization:

For example, valid section numbers for Euroscale machines, range from 0 to 60. Suppose that in your organization, Butcher's is sector 123, fish section sector 90 and bakery sector 543. You cannot directly indicate these numbers on the scales, but by the creation of a counter in Hydra +, you can do this:

Counter → 90 → Machine section 1  
 Counter → 123 → Machine section 2  
 Counter → 543 → Machine section 3

By scales configuration, sections will be 1, 2 and 3, but respecting Hydra +, you will see article data and sales data organized in counters (90, 123, 543). By transferring of data price changes, for example, you can indicate that one data belongs to counter 90, another to 123 and another to 543, and Hydra + is responsible for translating the data and redirecting these back to the scales with machine section 1, 2 or 3.

**There can be more complex cases:** Supposing you have only a scale, but you want in your data management system, data organized in "Charcuterie Section" and "Cold Meat Section" In practice, these articles will be sold on the same scale, but for you there are different sections. You can associate two counters to the same machine section:

- Counter 52 : Charcuterie → Machine section 1
- Counter 73 : Cold Meat → Machine Section 1

Data will reach the same scale, although there are different sections.

- NOTE: These operating modes have advantages and disadvantages by data recovering and operating with scale properties (headers and legends, bar codes, etc.) Study in your case if advantages outweigh disadvantages, before implementing systems with different machine section or several counters associated to one machine section.

[Start](#)

## 2. COMUNICACIONES CONFIGURATION

You have to configure Hydra + to suit your needs. In this section we will discuss how to establish communications between computer with Hydra + and scales.

On first part, we talk about direct communications, that is to say, through network card, network path or RS-232. In second section, modem communications are detailed.

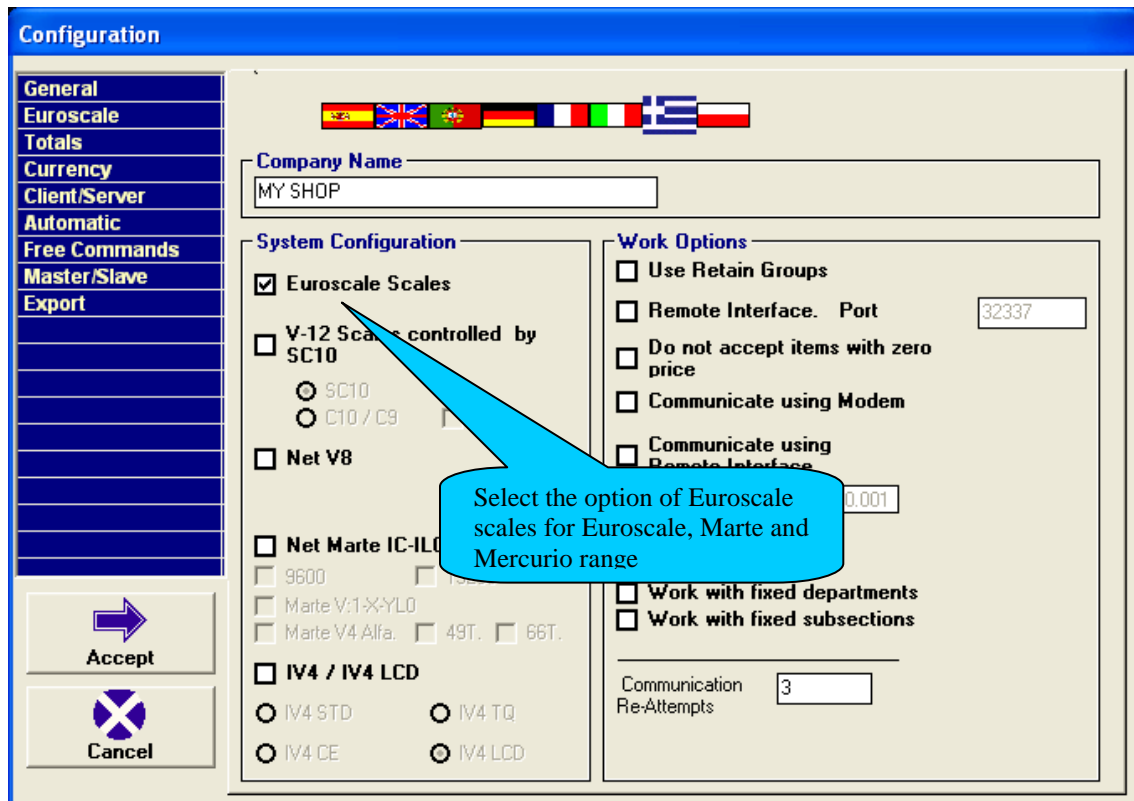


## Start

### 2.1 Configuration for working with Euroscale, Mercurio or Jupiter scales.

Accessing to configuration menu, we find at initial screen the option to select Euroscale scales:

- Select the box "Euroscale scales"
- If you won't use other equipments, let unmark boxes concerning other types of equipments.



Go to tab "Euroscale" to configurate communication options

- In this tab you can configure the communication type :
  - TCP/IP: In this case you have to indicate scales socket port **6000** by default.
  - RS-232: In this case you have to configure the RS-232 port (port, speed, parity, data bit), 19200, E, 8, by default. NOTE: Stop bits are always "1".
- If your communication is via MODEM, refer to chapter via modem
- You can also specify whether your system will use 20 lines of descriptive(mark it always, excepting very specific needs)
- To use 20 lines of description, the scale has to be version 9 or later.
- If you work via Ethernet (TCP/IP), by normal conditions DON'T select box "work with server by section (NetID)". If you have special needs, see appendix 7 of this manual regarding the use of NetID.
- If scale version is program D or later, select always option version "Version D : client programming and article decrease data"

- If you are interested in bovine tracking, select "resort to bovine cards ", and depending of scale version, select "Version C" , "Version D" or "later"
- For using functions /Order / Stock list, you must select the suitable options according to work modus you want to use.
- At field "Special label", you can select a family and a label number, so that all articles belonging to this family will send to the scales with selected Label, without the need to select data on each article.

**Note: For up to date scales, year 2009 or later, all the boxes of this paragraph have to be selected "Version 9 and newer".**

NOTE: IF YOUR EUROSACLE EQUIPMENTS ARE INDICATORS ML-100 YOU HAVE TO PLACE A FILE CALLED "ML100.INI", EMPTY OR WITH ANY CONTENT, INSIDE HYDRA+ FOLDER, SO THAT THE PROGRAM CAN ADOPT THE NECCESARY SPECIAL CONFIGURATIONS.

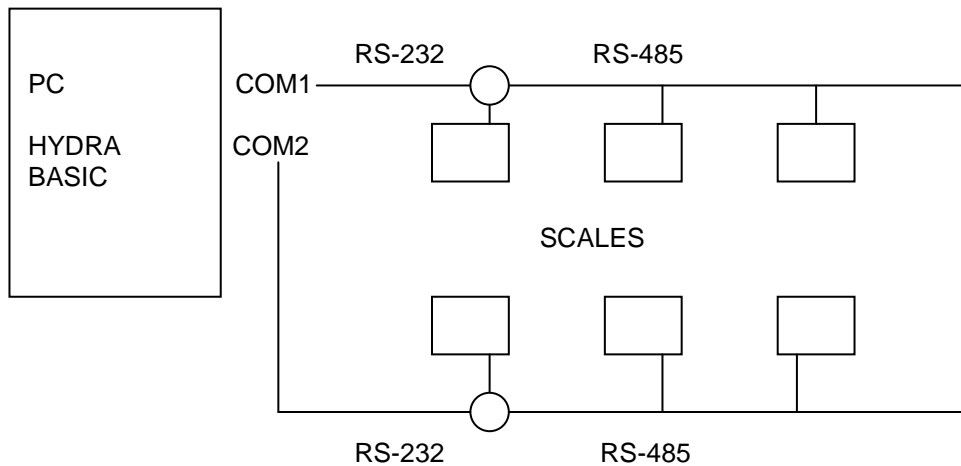
NOTE: CURRENT VERSIONS OF "EUROSACLE" SCALES, RECEIVED REQUESTED ORDER/STOCK LIST WITHOUT TO CLOSE SALESCLERCKS. BY OLD SCALES VERSIONS HYDRA+ MAKES THE SAME REQUEST BUT BY ORDER/STOCK LIST REQUEST OCCURS AN ERROR. TO SOLVE IT, YOU HAVE TO CREATE IN PROGRAM FOLDER A FILE CALLED "DESCONECTA.VND", EMPTY OR WITH ANY CONTENT SO THAT HYDRA+ MAKES THE REQUEST IN OLD FORMAT.

## Start

### 2.2 Configuration for working with Marte V4 IC – ILC scales

This scales behave as if they were a single section, that is to say, they share all their PLU data.

In order to create multiple sections, the scales of a section have to be connected together with a RS-485 cable, and one of them (which receives communications from Hydra +) have to be connected via RS-232 to a COM port of equipment with Hydra +. Another section will be connected, in the same way to another COM port of equipment, etcetera.



To achieve multiple COM ports, there are many options: USB/RS-232 adapters, PCI cards that provide extra ports, etc. (Please, contact our customer service).

Another option is to work with only one COM port and a RS-232 switch connected to it and to the different sections. In this case, the program before communicates with each section, ask the operator to change the switch to the right position.

For working with this type of scales we will distinguish by Hydra+:

**"Options" → "General configuration of Hydra+",** we select the system in which we are interested.

- Marte V4 IC - ILC: If desired, these scales can be connected together forming a mixed network sale/ packaging.

On general configuration, we don't select the communications port, even though it is different for each counter.

**NOTE: IF WE WORK VIA MODEM, WE CAN ONLY HAVE A COUNTER, BEING THAT WE CAN ONLY COMMUNICATE THROUGH THE PORT WHICH IS CONNECTED TO THE MODEM.**

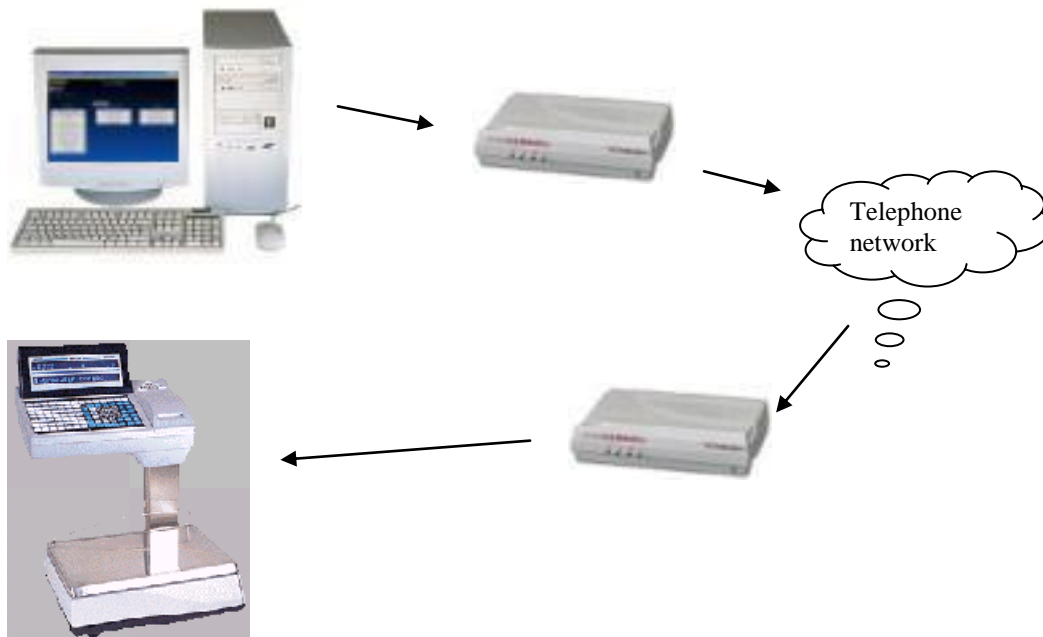
If the connection is direct (no modem), by counter creation, will be indicated the communication port, and we will create in each counter only one scale, that will be the one with which it will communicate.

## Start

### 2.3 Communication via MODEM

**Concept.** You can have installed Hydra+ in a computer which is far away from the scales (in another city, for example), and communicate with them through the telephone network, using modems. For this you need two modems, one for the store which will be connected to server scale, by Euroscale equipments, to hubs SC10 or C9/C10 by V-12 equipments, and at end of a RS-485 cable in networks EcoPrint, IV4, V8, EcoNEt o EcoLabel. Of course the store must have a telephone line. The second modem will bug to the equipment, in which Hydra+ is installed, and to the telephone line.

Regarding modem models, please ask our customer service or our sales staff, as they are the ones whose can you guarantee a quality modem adapted to this working mode.



Don't confuse working with modem with an internet connection. This is a point to point connection, only between your central and your subsidiary and don't have connection to your operating system configurations respecting Internet Connections.

**Configuration.** If you are working via modem, communication configurations are explained on chapters of different types of Scales, if they aren't configured in another specific menu. First, go to "Hydra+ General Configuration" → General tab

Work Options	
<input type="checkbox"/>	Use Retain Groups
<input type="checkbox"/>	Remote Interface. Port <input type="text" value="32337"/>
<input type="checkbox"/>	Do not accept items with zero price
<input checked="" type="checkbox"/>	Communicate using Modem

Select both, type of scale with which you will communicate, as option to communicate via modem. Note that in this working mode can not be mixed systems "Euroscale + Marte", etc. as the store modem will be only exclusively connected to a scale type.

Go now to tab "Modem" on general configuration menu:

**Configuration**

**Modem Parameters**

Data Transmission Speed: 9600 Bauds

Serial Port to which Modem is attached: COM1

Phone Number to Dial: 0034918304616

Hang Modem Automatically after end of transmissions

Configuration String (If you leave it Blank, program selects default configuration : AT&w&FQ0V0E0&D2&N + speed)

Accept

Cancel

First, select parameter "data transmission speed", communications will be made with specified speed, parity "N" "data bits" 8 "and STOP bit" 1."

**NOTE:**

Euroscale, Mercurio and Jupiter → Select speed in agreement with specified speed on scale  
Marte IC / ILC → Select 2400 bps, given the same value on scale(s).

Then, indicate port to which the modem is connected.

Indicate store phone number, you can indicate "0" previous to telephone number if you have to go through switchboard, as well as other special characters if they are needed.

Notice that, option "Hang up modem automatically at end of a transmission." is selected by default. So, every time we communicate with the scales, the telephone number is dialed, the connection is established, and is hanged up at the end. If you want phone doesn't hang up automatically, and the line remains open at the end of communication, UNMARK the option.

Starting chain, specify nothing, unless you have special models of modems that do not conform to those supplied by Grupo Epelsa.

With all this data, the system of central is still configured.

At the store, modem has to be connected to telephone line, so as to server scale or hub. This modem must be configured to receive calls automatically, for this, and if you use modems supplied by Grupo Epelsa, the program has a small utility that records this configuration in store

modem. Note that we are talking about the store modem, not about the central modem, which is connected to the computer.

Connect the store modem to a serial port of your computer, and go to menu "Tools" → "Configure store modem"

Select serial port (COM) to which you have connected the modem and communications speed.

On the lower lines appears the configuration that will be sent to the modem. If your modem is not adapted to those provided by Grupo Epelsa, you can change this two lines for the adaptation to your modem (Grupo Epelsa doesn't give support for non-approved modems)

\* NOTE: IN RECENT MODEMS 3COM MANUFACTURING IN ROMANIA, YOU HAVE TO CHANGE THE SECOND LINE THAT APPEARS AFTER INDICATING PORT AND SPEED AND INSERT IN THIS SECOND LINE THE FOLLOWING (LET FIRST LINE WITHOUT CHANGE):

**AT&R1&G0#CID=0S32=248&W0&W1**

With menu "File" you can save and recover from disk your created configuration chains.

[Start](#)

## 2.4 Communication by Remote Gateway

This option doesn't have practically use, because its objective is to connect Hydra+ with another computer, which is connected to a scale system, using the scale system as communications translator. With today's communications systems (ADSL), it is practically not necessary.

## 2.5 NET- ID. EuroScale Systems divided into sub-systems

In Euroscale machines conventional systems, the scale with the lower number works as server scale, distributing the data to all others, and storing the ticket data of the whole system.

If we work with Ethernet machines, these have a number in their network configuration, called "NetID", which normally is the same for all scales. This "NetID" number shows each of the scales belonging to the same logical network, so they share all their data (PLU, tickets, etc)

Suppose we want a system with special needs: large number of PLUs (server has more than 7000 articles with a line of descriptive), or a large capacity of tickets storage, higher than normal operations with this type of scales.

If we could have multiple servers, each of them with only a fraction of total system information, we could extend several times the capacity of scales network.

For this purpose, you can put inside network several groups of scales with different Net ID so, these scales will be independent to each other, not storing in a subnet data of another subnet. In each subnet there will be a server (the scale with the lowest number in each subnet) and Hydra + will connect to them making a cycle through all of them, for both data sending and reception.

To activate this option, go to "Options" → "Hydra + General configuration" and on Euroscale tab select field "Working with Server per Section (NetID)."

In each section that you create, you must specify server scale IP address for that section.

For example, suppose a system with three sections that we want to divide into two subsections.

Section 1 → Scales 1,2 and 3

Section 2 → Scales 5 and 6

Section 3 → Scales 12, 14, and 18

Sections 1 and 2 will be part of a subnet.

Section 3 will be another subnet.

We will specify on sections 1 and 2, the IP number of scale 1 (the lowest number in the subsystem), and in section 3, the IP number of scale 12 (which is the lowest number in this subsystem). From that moment, Hydra + will send data relating to sections 1 and 2 to IP address corresponding to scale 1, and data relating to section 3 to IP address of scale 12.

Regarding different types of data handle by the scale, there are data differentiated per sections, and other which don't have this concept. Therefore, there will be data that will be sent only to a system and other which will be sent to all systems.

- Article
- Barcodes
- Headers and legends
- Fres text
- Advertising and offers
- Keys
- Saleclerks
- Price segments

Data that will be sent to all subsystems:

- Value added taxes
- Clients
- countries
- Bovine files

Data reception: Tickets and order/stocktaking

You cycle through all the servers collect the data

A cycle through all servers is made collecting the corresponding data.

Additional notes:

→ The scale number must be unique throughout the system, that is to say, there cannot exist the scale number 1 in the subsystem 1, the scale number 1 in the subsystem 2, etc.

→ The machines have to be configured to generate tickets with numeration "Unique RL", so that each scale has a numeration that is different from the rest of scales, and so ca be univocal known the ticket origin with the pair scale number + ticket number.

[Start](#)

### 3. OPERATIVE AND FUNCTIONALITY

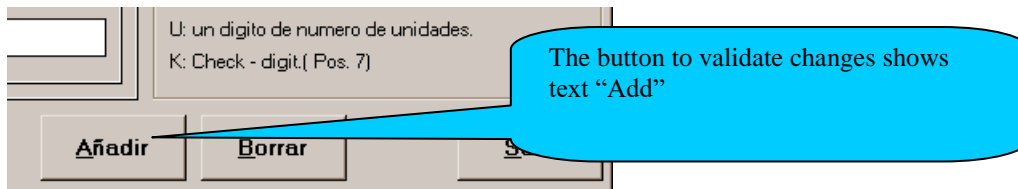
#### 3.1 General management by store data entry forms

**Concept.** Whenever you want to change data on scales system, you will do this through data entry forms. All of them have a similar working way.

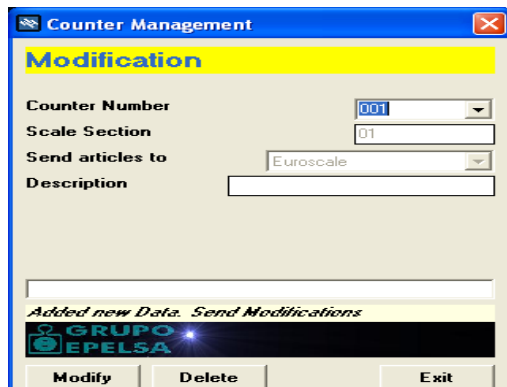
Add or modify data. When you select a data (article code, scale, etc), Hydra + will automatically

**Data Addition or modification.** If you select a data (article code, scale, etc.) Hydra + will automatically look at its base if this data exist. If the data doesn't exist, Hydra+ will handle as we want to introduce a new data and the following text appears:

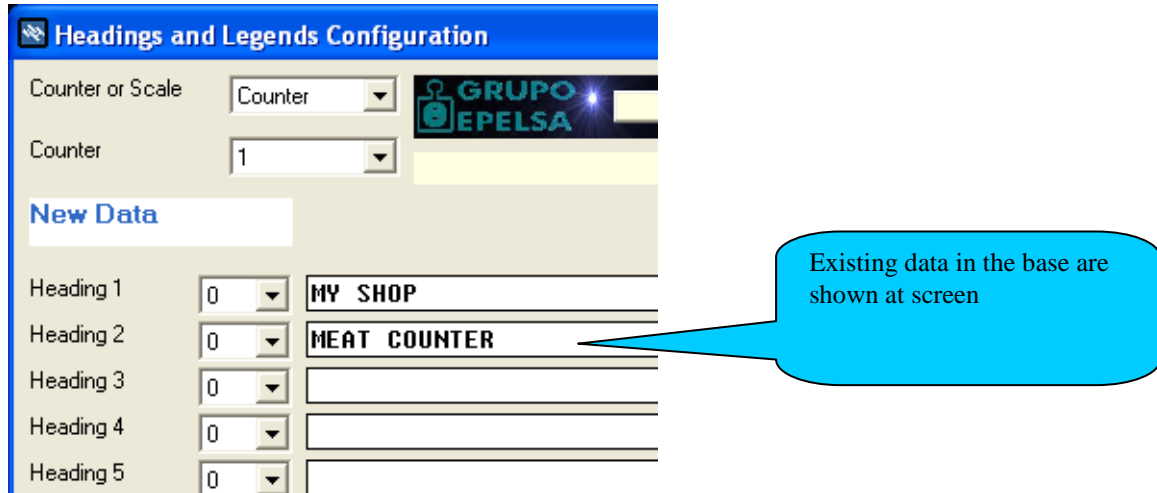
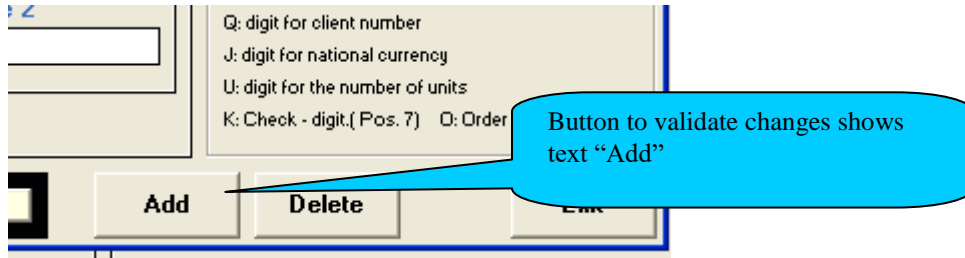
.



If data already exists, it will be shown on corresponding boxes, and text for indications will be another:







**Implementing a data addition or modification.** Whenever you want to introduce data on data base, you have to press buttons “Add” or “modify”. If you exit the form without pressing the buttons or you change to another data, the changes will not save. This is a security measure to prevent errors changing data by oversight or error.

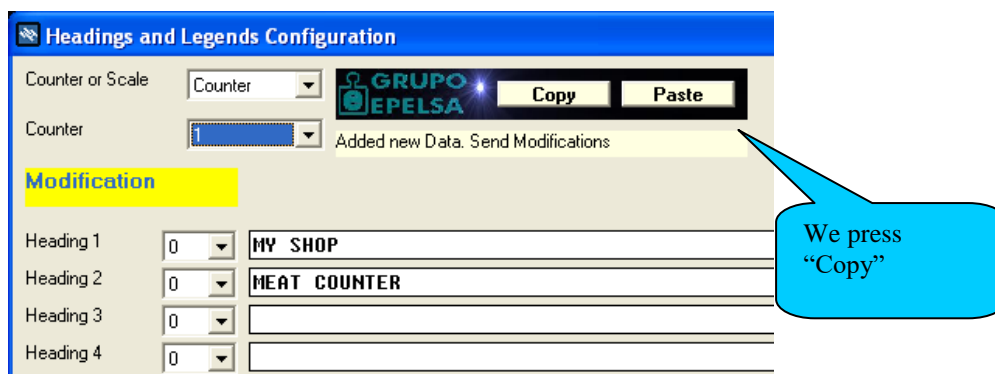
**Data erasure.** For data delete, press button “delete”

**Additional help.** On forms where we insert same values in several sections or equipment, we can use buttons “copy and insert” for transfer all the data at once. For example, we have headers and legends in counter 23:

- We press copy button.
- We go to counter 27
- We press insert button
- We press "add" to confirm the change.

**Don't forget that besides to “Insert” you have to press “Add” or “Modify”, whichever applies, to validate the change.**

We go to counter 27 and insert. We press accept and data is stored.



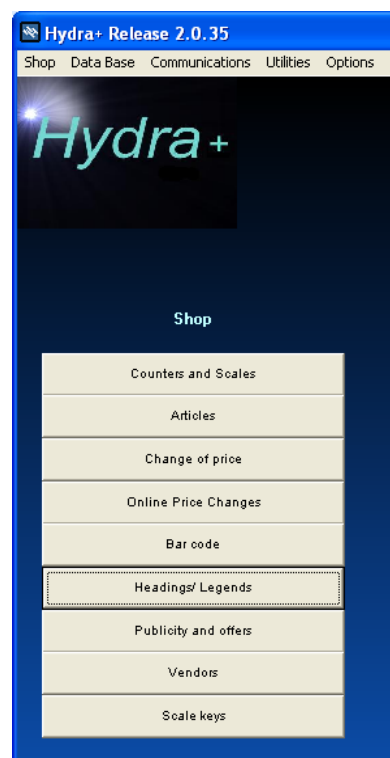
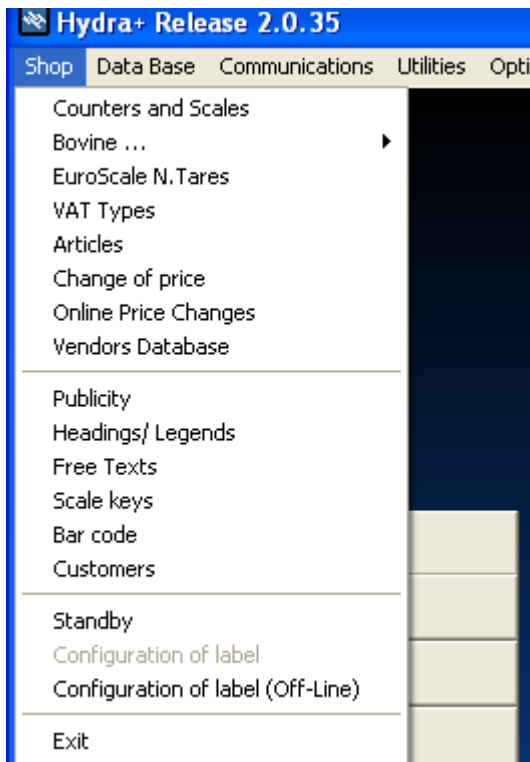
## [Start](#)

### 3.2 Store Structure creation

**Concept.** HYDRA+ allows the creation of two store types:

- If you only have selected one scale type, for example “Euroscale”, we will have homogeneous stores with only one type of communication.
- If you have selected more scales types, for example “Marte” for packaging, in each communication we will have access to the different scale types through the port that correspond. Making this set of systems homogeneous and transparent as far as possible

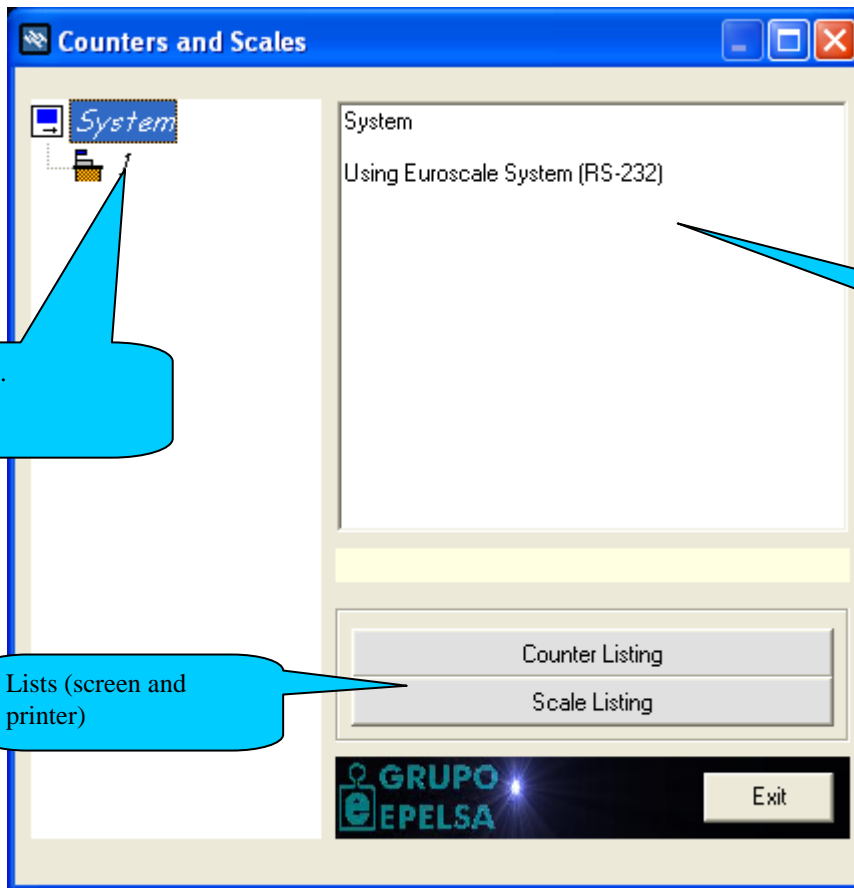
**Configuration.** Store structure is created through screen "Counters and Equipments", to which you have access, either through Menu "Store" or through button "Counters and Scales".



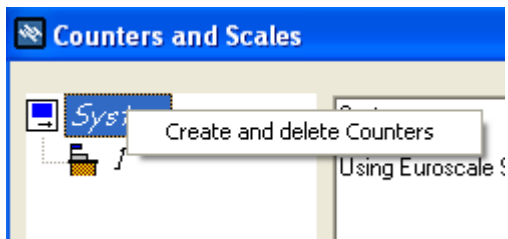
By screen access, the whole store structure is shown in tree form. At first, appears only a symbol indicating “System”.

On the right of it, there is an information box with system, counter, or selected scale features.

The interface has also two buttons with which we can get a list of all counters or scales for consulting or printing.



If you press on "System" with the right button, you can create and delete counters:



If you select it, you will have access to the screen on which you can define the counters where scales and articles will be assigned.

Within counter configuration these data are defined:

- Counter number: It is a unique number which is valid for article data and article totals management. Also known as "Management Section Number". This number can vary between 0 and 999.
- Scale section: It is the section number which scale recognized and with which the whole scale system works (Euroscale and/or V-12) for communications purposes. Counter and scale section number can be different and several counters can be associated to the same scale (in this case, the complete data such articles, headers and legends, keys, etc will be shared). Respecting administrative article management or user security limitations, can be of interest to separate two counters with different numbers although they are associated to the same scale section. In V-12 scales the scale section can be between 0 and 99 and in Euroscale machines between 0 and 60.

NOTE: This data is valid for Euroscale and V-12 scales, the rest of systems don't have the section concept.

- Description: An informative commentary of maximum 21 characters (for example "delicatessen").

If only Euroscale machines are used, the box "send article to" is locked, but if you have a mixed store, you have following possibilities:

- Send articles to Euroscale: To this counter associated article data, will be only send to Euroscale machines.
- Send articles to SC10 or C9/C10: To this counter associated article data, will be only send to V-12 scales and not to Euroscale machines.
- Send article to V8: To this counter associated article data, will be only send to V8 scales and not to the rest.
- Send article to Marte range (Eco Label/Net): To this counter associated article data, will be only send to machines of Marte net (Eco Label and/or Eco Net), not to the rest.
- Send article to IV4/Eco Print: To this counter associated article data, will be only send to IV4 or Eco Print machines, not to the rest.
- Send article to Euroscale+SC10: To this counter associated article data will be sent to both systems (Euroscale and SC10), but not to the rest.

NOTE: See also article configuration, as for these, you can also specify whether you want them to reach Euroscale/V-12 system regardless of counter type.

If counter type is V8, or Eco Net / Eco Label, appears an additional box in which you have to select the serial port through you want to send the counter data.

- If all ports are different, the communication to the different sections will be automatic done.
- If two or more ports are equal, the user will be asked before communication, to change switch RS-232 to the right position.
- This port value isn't valid for communications via MODEM
- You can also select the value "Not communicate" to exclude temporarily the communication to a section.

If you want to create scales associated to a counter, click with the right button on a counter. Three options appear:

- Create and delete scales
- Modify data of indicated counter
- Delete indicated counter.

Select "Create and Delete Scales"

Within scale data, we must distinguish:

- Scale number: A unique identifier within the scale network indispensable for data communication.
- Description: A 21 characters informative text for example : "meat scale"
- If the machine is Euroscale, and it will be connected to the equipment through TCP/IP, we have to indicate besides the scale IP address, also if the scale is Server scale (don't forget to indicate always the Server scale). Note that the Server scale has to be always the scale with the lowest scale number. In Euroscale communications via RS-232, the equipment has only access to the Server scale but remember that the equipment connected through cable RS-232 has to be the equipment with the lowest number.
- In Marte scales (Eco Net/Eco Label) or V-8 scales we have to indicate only one scale per section, that is the one with which really communicates.
- In IV4 / Eco Print scales, we have to indicate all the scales, so that the program recognizes them and can communicate with them one by one.

### 3.3 VAT Rates Configuration with Hydra+

**Concept.** If you want a separate sales management per VAT rates, with Hydra+ you can define up to 5 different VAT rates that you can later include as data, in the configuration of each article.

If you use Euroscale, V-8, Eco Label, Eco Net, Eco Print or IV4 scales, this data will be send to the scales and will be shown on the ticket if these option is selected on the scales, (see scale manual and option availability)

The V-12 scales connected to SC10 don't pay attention to the VAT types, but data are likewise on Hydra+ data base and can be used for their management.

**Configuration.** Go to menu "Store" than click on section "VAT" a form that allows you to define 5 different VAT rates, appears:

- It is recommended to leave the first type (type 0) blank or with a generic value, as this type will be leave, by default, for all article types in which a specific VAT is not configure and for sales without the indication of code or PLU (sale per price).
- To fill in the fields, enter data in percent, for example "17" for 17% or "14,15" for 14,15%

**Management**

- Configure article data indicating VAT type (from 0 to 4), NOT value (17%)
- Likewise, in total data appears VAT type and not the value.

**Sending to scales**

- Each time article data are sent, VAT types, if they are defined, are sent too.
- You can also make it in " separated sending" → "VAT types sending"
- Note, that under certain conditions, the scale doesn't accept the change of VAT types (by accumulated totals, for example) so that, these data should be filled in, before the first master database is launch, or after an erasure of scales data totals.

[Start](#)**3.4 Tara types Configuration with Hydra+****Marte V4 ILC scales (Old ecoLABEL)**

**Concept.** Labelling scales Marte V4 ILC type, work with a maximum of 10 different tare types. By later article configuration, you have to choose between one of these 10 tare types to indicate this article data.

Type	Value
Type 1	0
Type 2	0
Type 3	0
Type 4	0
Type 5	0
Type 6	0
Type 7	0
Type 8	0
Type 9	0
Type 10	0

**Configuration.** Go to menu "Store" → "Eco Label" → "Tare types"

Insert tare value in gram.

Later, by article adding or modifying, you have to specify the corresponding tare type.

**Sending to scales.** Each time a sending to scales is made, the configure tare types are sent.

[Start](#)

### 3.5 Article Configuration

**Concept.** By article configuration you have to insert some basic article data, as price, descriptive text, section, etc. These are the essential data description:

- **Counter.** Each article has to be associated to a counter, so that scales system knows to which store department article data must reach. Once article is created, counter can never be changed. Instead, delete article and recreated it in another counter.
- **Code.** Is a number between 0 and 999999 which acts as a unique identifier regarding scales system, each article must have an associated code number.
- **PLU.** Acts similar as code. But its validity is limited to the counter where we have defined the article. It has values between 0 and 9999. If we don't indicate PLU number, Hydra+ assigns one automatically to article. Consequently:
  - An Article can be treated either by its code number or by PLU number plus section number, as desired in your management.
- **Price.** It is the article sale price.
- **Subsection.** To differentiate different sales points within the same counter .The values range from 0 to 9999. Note that for scales that aren't V-12 connected to SC10 hub, this data is only informative, because this scales unlike V-12, don't work with subsections.
- **Family.** Similar to subsections, it differentiates sections or groups within a counter. Its values range from 0 to 255. We recommend to use this value instead subsections, then family is used by scales of all ranges and makes easier for example a possible future transition from a V-12 system to a more versatile Euroscale system.
- **Sale method.** V-12 scales and Euroscales allow selling both weighing products and also not weighing products. Indicate always article corresponding one. By Eco Label scales, you can select box "weight per 100grams" to indicate that price value is per 100gram and not per kilogram.
- Scales allow you also to indicate expiration data and article tare.
- **Descriptive.** Are texts that appear on displays, tickets and labels, referring to article. By V-12 scales we can handle up to 10 lines (principal+ 9 additional) and by Euroscale machines 21 (principal + 20 lines)
- Euroscale machines allow also to indicate these data:
  - Data of "best before"
  - Particularly article barcode
  - Article special label
  - Stepped prices. You can indicate up to 3 different weight steps for whose article price can vary (usually discounts for large sale volume).

**Configuration.** Go to menu "Store" → "Article".

A form appears to add new articles or modify existing ones.

If you insert a code or PLU, the system search for the corresponding existing one on data base and if it exists will be shown on screen immediately, in the other case, the system let the fields in blank, so that you can insert all the data of the new article.

To validate the inserted data, you have to press "Add" or "modify", whichever is applicable.

Remember that by registrations you have to insert at least, code, price, and main descriptive. PLU is optional and will be inserted automatically if you don't fill it.

- Code, Section, PLU, Subsection, Family, Price, Sell-By-Date, Tare, Sales method, 10 lines of descriptive and 10 fonts.
- If you have selected "Preserving groups", a box will appear to enter group number.
- Field "VAT type" appears too.

And also extended data appear, that is to say, 20 lines of descriptive and tab with title "Only Euroscale" where you can configure additional data of this scales.

**\* NOTE: For seeing the 20 text lines, you have to activate this option in "Options" → "Hydra+ General Configuration" → Tab "Euroscale", selecting box "20 descriptive lines and step prices". These options are only supported up Euroscale program version 9.**

- **If you have a mixed system, appears an additional box** "Send this article to both systems". Normally, the article is sent to the corresponding system, depending on configuration we have made on counter configuration (only sc10, only Euroscale, or both). But if we select this option with value "Yes" article data will be send to both systems at the margin of counter configuration. In this way we can have a generic group which will only sent to one of the systems, but with specific articles that we want to send to both systems.

Items Configuration

List

New Data

Clean

General | Euroscale

Code

Counter 1

PLU

Subsection

Department

Price (Sterling)

Expiry date

Tare

Type of VAT

Type of Sale Weighed

Best Before

Descriptives 1-10 | Descriptives 11-20

Main	Text	Source
Line 1		0
Line 2		0
Line 3		0
Line 4		0
Line 5		0
Line 6		0
Line 7		0
Line 8		0
Line 9		0

Articles in that section : 0

Add Delete GRUPO EPELSA Exit



[Start](#)

### 3.6 Step Preis configuration for EuroScale- Mercurio and Júpiter.

The scales of these ranges allow the configuration of up to 200 articles with step prices. Hydra+ will refuse the article that overpasses this number.

In this way, we can have articles with these features:

Example:

We want a article with a sale price of 21, 50 €, but in case that costumer purchases more that one Kilogram, price will be reduced to 19, 75 € and when costumer comes through 2,5 Kg, price will be reduced to 17,43€.

In this case, on tab “Only euroscale” we will select box “Activate article step prices ”, indicating step 1 (in this case 1 kg), step 1 price (19,75€), step 2 (in this case 2,5Kg), step 2 price (17,43€)

Thereby, we have three price steps, the base price and two additional.

If desired, you can only fill in the first step and let the second step blank, so that we will have only two steps, the base step and one additional.

**Lists.** From this form of Hydra+ you can also access to a list of all articles, a list of articles from selected counter or a list of price changes made. For this, click on top side on “lists” and select the desired one.

## Start

### 3.7 Bar code configuration with Hydra+

**Concept.** Hydra+ allows the programming of barcodes that will appear on scales tickets and labels.

**Restrictions.** Check on scale manual which bar codes are available for your scale model and for which sale mode (sale, packaging...) can be apply. Not all codes can be viewed in all scales and modes.

If a correct bar code cannot be viewed on ticket, check that options on scales for showing bar codes on tickets and/or receipts, and in case of Euroscale machines label design, are activated

**Configuration.** Go to menu "Store", and than to "Bar codes":

Remember that bar codes have to be defined with 12 scripts, if not you will get an error message.

- **Marte V4 IC/ILC (ecoNET and ecoLABEL)**  
Support three bar codes (three work modes) per section (Scale group)

The screenshot shows the 'Bar Code Management' window. At the top, there's a 'New Data' button and a 'Counter or Scale' dropdown menu set to 'Counter'. Below that is a 'Counter' dropdown menu set to '1'. The main area is divided into 'Net' and 'Local' sections, each with 'Sales Mode', 'Super Mode', 'Mixed Mode', 'Packaging Mode 1', and 'Packaging Mode 2' input fields. A 'Define Both at once' checkbox is present. On the right, there's a list of codes with their descriptions: S: detect overflow, SC10 (no G-388), W: weight, Z: price, I: amount, T: N°.tickets, P: N°.plu, C: code, V: N°.vendors, A: N°.articles, L: digit for lot number, F: digit for manufacturers code, M: digit for country code, X: digit for next customer code, D: one digit of weight in a tenth of a gram, N: n°. of scale: G: Peso Antes de merma, Y: N°.counter, Q: digit for client number, digit for national currency, U: digit for the number of units, K: Check - digit.( Pos. 7) O: Order Number. At the bottom, there are 'Copy', 'Paste', 'Add', 'Delete', and 'Exit' buttons. Three callouts are present: one pointing to the 'Counter or Scale' dropdown with the text 'Select equipment or destination counter', one pointing to the input fields with 'Fill in codes of different work modes', and one pointing to the code list with 'Help Texts'.

## Start

### 3.8 Headers and Legends

**Concept.** Euroscale-Mercurio and Jupiter scales can show up to 5 headers lines at ticket beginning and 5 legends lines at ticket end.

These lines can be defined for a whole section or for a specifically equipment. Equipment configured data have priority over indicated for section, that is to say:

Example:

- Section "12", has 3 scales (15,14,6)

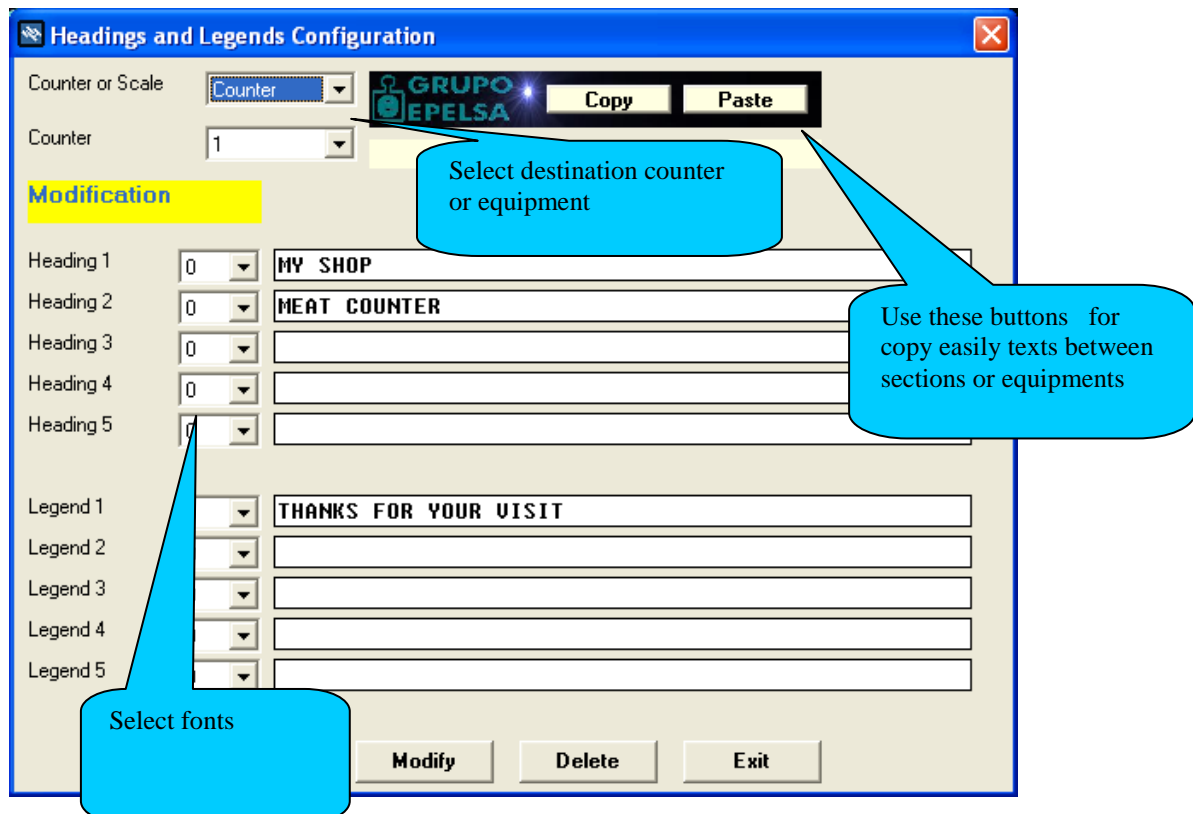
We program headers of section 12, and some particularly for scale 6.

Result:

- Scales 15 and 14 will show section programmed headers.
- Scale 6 will show specific programmed headers for this equipment.

#### Abilities

- For Euroscale machines , the available fonts range from 0 to 77
- Maximum line length of 25 characters, but with some large fonts, it can be that the 25 characters don't pass on line.
  - Select data (Counter or Equipment)
  - Write headers and legends and select fonts
  - Press "add" or "modify"
  - For writing the same text in several sections, use "copy" and "insert" buttons to copy at once data in another section or equipment.



[Start](#)

### 3.9 Advertising texts and offerings with Hydra+

#### EuroScale Mercurio and Júpiter systems

**Concept.** With Euroscale Mercurio and Júpiter scales, you can program advertising texts that will be viewed on display. There can be two types.

**Continuous advertising:** Text of medium or long length, it moves from right to left across display screen.

**Offerings:** Are short texts that change at regular text intervals.

Every time can be active on scales continuous advertising or offers, but not both simultaneously.

**Configuration.** Go to menu “Store” and than to “Advertising and offerings”. Write the texts of continuous advertising or/and offerings, selecting previously counter or equipment to which the programming have to be sent.

You can also:

- Activate advertising: Text of continuous advertising will be shown.
- Activate offerings: Programmed offerings will be shown successively.
- Deactivate both: No text will be shown.

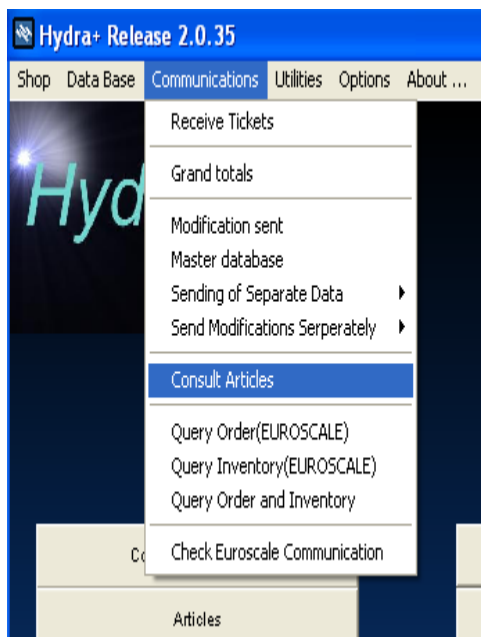
[Start](#)

### 3.10 Query and Article File Creation with Hydra+

**Available for EuroScale, Mercurio, Júpiter and Marte scales.**

**Concept.** With Hydra+ you can consult scales article data. In one hand, that allows to compare data with available on Hydra+ data base and in the other hand to generate files for later importation and to regenerate data bases where article data have been lost.

**Work method.** Go to connections → Article query.



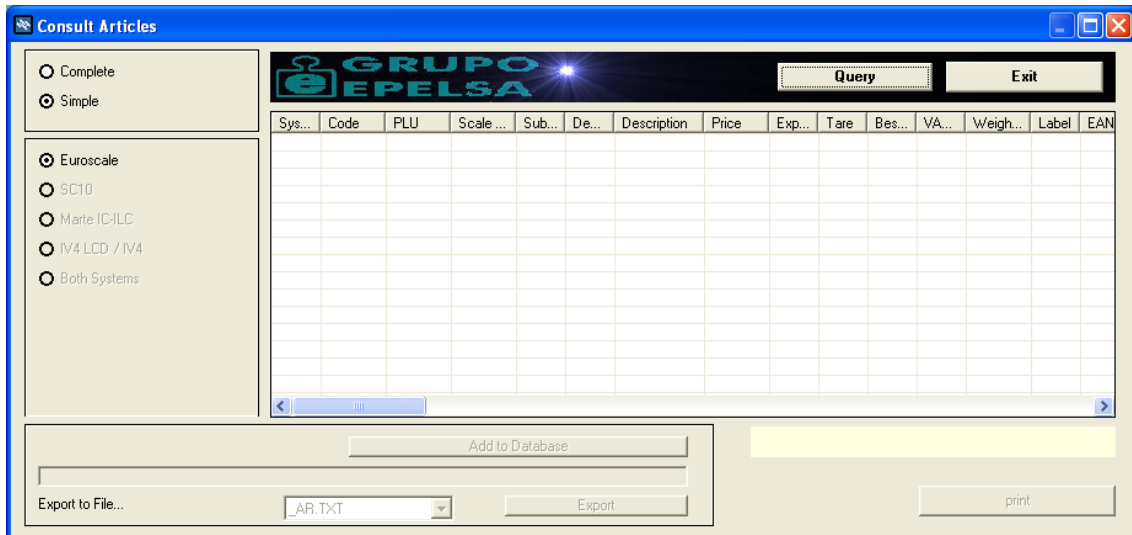
A form with several options is shown:

On top you can select the system you want to consult:

- Consult Euroscale, Mercurio and Júpiter (Euroscale) data.
- Consult SC10 data
- Consult Marte (EcoLabel/Net) data
- Consult IV4/EcoPrint data
- Cosult both systems.

You can also select Query type:

- Simple : Article Basic data (faster)
- Complete : Includes descriptive
- If you want to consult data, press button “consult”. System gets in touch with scales and data will appear.



## [Start](#)

### 3.11 Export to file

**Concept.** When you have completed data consultation, you can export these data to text. You can choose exit format, according to the files you have configured on "Configure Import Files." If you have several configured files, choose the appropriate and click "Export." The indicated file will create within the program folder. (See chapter "Import Data").

If desired, we can later import these data from utilities → "Import from file".

**Data base insertion.** Apart from the generation of a file, you can insert data directly in Hydra+ data base pressing appropriate button. If counter of received data, does not exist, will create automatically.

- Euroscale: This feature works only with Euroscale machines that support binary protocol (up program version 9)  
Subsection data can not be recovered because Euroscale doesn't keep this data on its base.
- Ranges Mars, IV4. Not all this type machines return data from Weighed / not Weighed.

#### Limitations.

- Euroscale: This function works only with Euroscale machines that support binary protocol (Starting from version program 9)  
Subsection data can not be recovered because Euroscale does not keep such data in its base.
- Ranges Marte, IV4. Not all machines of this type return data of Weight/ Not Weight.

## [Start](#)

### 3.12 Store structure absorption function

**Available for EuroScale Mercurio and Júpiter machines.**

**Concept.** If you work with Euroscale, Mercurio or Júpiter scales (TCP/IP or RS-232) you can regenerate the store structure from scale data.

#### Limitations.

- If in your Hydra system, counter numbers are equal as section scale numbers, you don't have any limitation.
- If numbers of management section are different from section scale, you have to create manually the counters and the function can only recover scale data (not counter data) because neither Euroscale, nor SC10 keep information about management sections.

- If you have several counters associated to the same scale section, the recovering cannot be made correctly.
- If you work with Euroscale via Ethernet, you have to insert manually scales IP addresses, with server scale exception, because this data cannot be got from scales.

### EuroScale, Mercurio or Júpiter

First, number each scale (if you don't have done before), and by new installation, configure the net.

During structure absorption, all Euroscale machines should be working.

If you work via Ethernet, make sure to restore IP addresses in "Counter and Equipments".

**Process.** Go to menu → Utilities → Absorb store structure

If you have Euroscale machines via Ethernet, you will be asked for server IP address and its communications port. Previous to continuation, insert these data.

Process can take up to two minutes depending on system dimension and transmission speed.

When message "Process completed" appears, check counters and equipments structure before continuation.

[Start](#)

### 3.13 Working in continuous mode

Short summary of continuous work, for more details see other sections of this manual.

You can use continuous working mode with Euroscale, Mercurio and Júpiter machines. In this working mode, Hydra+ can be configured that in certain time periods (from 2 seconds to 10 minutes), receive data and/ or send modifications.

You may prefer this working mode for two reasons:

1<sup>o</sup>) You don't want to treat in continuous modus import and export data, but you want to receive/send data continuously to avoid that operators have to send modifications, or you want to shorten the time of ticket reception at end of the day. In this case, go to general configuration menu, on section "TOTAL" select option "Continuous Ticket Reception" indicating period of reception:

The screenshot shows the 'Configuration' window with the 'General' tab selected. The 'Real Time Ticket Reception' section is expanded, showing the following options:

- Real Time Ticket Reception (Interval: 30 sec)
- Send modifications in the same interval

The 'Price Changes written directly from scale' section is also expanded, showing:

- Include in Database after totals reception

The 'Euroscale' section is expanded, showing a table of options:

	Net	Local
Receive Totals Sale	<input checked="" type="checkbox"/>	<input checked="" type="checkbox"/>
Receive Totals Super	<input type="checkbox"/>	<input type="checkbox"/>
Receive Totals Packaging	<input type="checkbox"/>	<input type="checkbox"/>
Receive Totals Self-service	<input type="checkbox"/>	<input type="checkbox"/>
Receive Totals Bovine Cards	<input checked="" type="checkbox"/>	<input type="checkbox"/>
Delete Totals from Euroscale	<input checked="" type="checkbox"/>	<input type="checkbox"/>
Delete Totals from Bovine Cards	<input checked="" type="checkbox"/>	<input type="checkbox"/>
Restart Ticket Number after Totals Erasure	<input checked="" type="checkbox"/>	<input type="checkbox"/>
Strict Ticket Checking	<input type="checkbox"/>	<input type="checkbox"/>

The 'SC10' section is also expanded, showing:

- Receive Totals Sale
- Receive Totals Super
- Receive Totals Packaging
- Receive Totals Self-service
- Delete TICKET.DAT
- Delete ETI.DAT
- Erase Totals from

At the bottom of the window, there are 'Accept' and 'Cancel' buttons.

If you also want that modifications (price changes, etc) are sent continuously, select option "Sending of modification in same interval".

2º) You want a file link with other application (for example a TPV) and a working mode with Hydra+ automated as much as possible without operator interaction. In this case you have to select the "ASCII link" on general configuration:

- On section "Total", as on point one done, select interval of ticket collection (from 2 seconds to 10 minutes)
- On "Client/Server" section, select the ASCII link indicating:
  - If you want that program check periodically the existence of an article import file and import it, indicate its name on required box. If you don't specify a concrete one, it will be checked the existence of all configured in the system for it possible import. After import, file is deleted.
  - After file have been imported, the modifications can be send automatically if you have select option "Sending modifications by files receiving", in other case you have to do this manually
  - You can also generate file(s) of received tickets in continuous mode, if you select the corresponding option.
  - You have two possibilities:
    - 1ª) Only one file is generated and accumulates all tickets. For this, you have first to configure a header + lines file with the wanted format.
    - 2ª) For each ticket will be a file generated, so that we have multiple files differenced by its name. Data format of these files is fixed, but you can configure the file name to make them different.
- ASCII link can be modified:
  - In one hand, the program check periodically the existence of order files inside folder "ASORDEN", orders that can be sent by management program.
  - In the other hand, on "General Configuration" → "Automation", you can indicate the time of day for total reception + scale erasure, and time of day to end the program .
  - Also inside "General Configuration" → "Automation", you can select the icon options so that program is minimized as a icon on status bar ((next to windows clock)

[Start](#)

## 4. LINKS

### 4.1 Possibilities of data import

**Concept.** With Hydra+ you can collect data of files sent by other programs for inclusion in the base and later sending to the scales. Actually Hydra+ has:

- a) Configurable article import.
- b) Import with fixed format of bovine cards.

[Start](#)

### 4.2 Configurable article import

In principle Hydra+ doesn't recognized any type of article files, but we can configure it to recognize different format files.

These files must be plane ASCII type. In each line will be indicated the data of one article and all lines must have the same format. The files should be place on folder where Hydra+ has been installed, so that you can import them.

To configure a file, go to "Options" → "Configuration import files".

First , enter the file name.

This will be the name by which Hydra+ will recognize the file when it finds, later you can change the file configuration indicating its name.

Create configuration, indicating fields and their position on the line.

Suppose a file, in which the first six positions indicate the article code, the next three the counter, the 21 following, the main descriptive and the next 7 the price. Each file line would looks as these:

```
017543043QUESO FRESCO BURGOS 0001234
023432032ALMEJAS CALIDAD 1    0000432
```

We will create the configuration indicating:

Field:

```
  COD (code)
  start 1 (first character)
  end 6 (last character)
```

(press add)

```
  MOS (counter)
  start 7 (first character)
  end 9 (last character)
```

(press add)

```
  TXT (text)
  Text line number: 0 (main)
  start 10 (first character)
  end 30 (last character)
```

(press add)

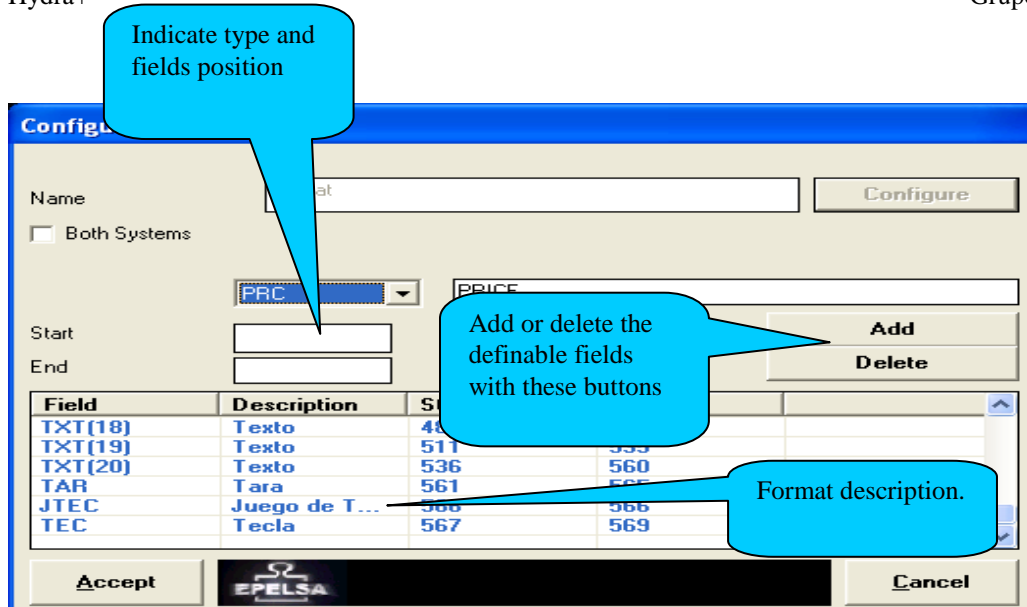
```
  PRC(price)
  start 31 (first character)
  end 37 (last character)
```

(press add)

Finally, press ok to save changes.

At this time, Hydra + recognize the file, and when you go to "Tools" → "Import from file", you can import the file, pressing the button that appears with the indicated file name.





If you have a mixed system (Euroscafe + V12) you can select or not, box "Send articles of this file to both systems". If you DON'T SELECT this box, article data will be sent as on counter defined (only SC10, only Euroscafe or both). If you SELECT the box, the article data will be sent to both systems.

**Portability.** Definitions of these files are saved in files within program folder with the extension ".fia", so, if you have defined a file called "estandar.dat", your definition file is called "estandar.dat.fia". If you copy this file to other installation, the destination Hydra+ will also recognize this file.

#### Definable fields. Article basic data:

- You have to consider, that you can only indicate the article code (leaving out the PLU), in which case the program will assign to the article a free PLU, but you can never indicate only the PLU without article code.
- If a section does not exist in the store structure, the article will be rejected.
- If you try to program an article that already exists, changing section or PLU, article will be rejected.
- Article erasure. It will be sent an article line with article price zero and main description blank (ASCII 32 fonts).
  - "COD" → "Code"
  - "PLU" → "Plu"
  - "MOS" → "Counter, management section"
  - "SUB" → "Subsection"
  - "FAM" → "Family"
  - "PRC" → "Sale price"
  - "WGH" → "Sale type (weighed/not weighed)"

Accepted values for "Weighed":

"W"  
 "P"  
 "0" (zero)

Accepted values for "Not Weighed" (units):

"U"  
 "1"

"IVA" → "VAT Type"  
 "CAD" → "Sell by date"  
 "PRE" → "Best before"  
 "TAR" → "Associated tare"

At least, you have to indicate, the main article descriptive besides 20 additional lines. By configuration of this field type, you will be asked for the descriptive line that you are configuring, select 0 for the article main descriptive and from 1 to 20 for the rest lines.

If you will work with packaging mode, it is recommended to plan the inclusion of font types, as the default font (cero), isn't always good for the different label fields. In its configuration you will be also asked for the line number (zero, main description, and from 1 to 20 for descriptive). If you only use Euroscale equipments, fonts are managed through the label editor GEDIT, and not the indicated in the program (ignored)

"TLT" → "Font type"  
 "TXT" → "Text"

**You can specify particularly bar code of each article:**

\*For articles in which you don't want to specify the barcode, leave the field BLANK (with characters ASCII 32 ).

"CBA" → "Article barcode"

**If you use conservation groups, you can here indicate group number:**

Properties15).code = "GPC"  
 Properties15).description = "Conservation group"  
 Properties (15).max = 2

**You can indicate the specific article label type:**

If some articles are used with specific label and another without specific label, by articles without specific label (these which will use the default label), the label value has to be "ETQ" 255.

"ETQ" → "Label typ"

**There can be indicated, prices by step for articles (max. 200 articles with price by step)**

If we want to import some articles by price step and another without, it is recommended to use two different import files. First file for articles by price step, indicating these fields, and second file for articles without price step, not including these fields:

"TRM1" → "Step 1"  
 "PRC1" → "Price step 1"  
 "TRM2" → "Step 2"  
 "PRC2" → "Price step 2"

**You can indicate for each article the corresponding key in the section:**

If we want to import some articles with associated keys, it is recommended to use two different import files. First file for articles with associated key, indicating these fields, and second file for articles without key, not including these fields:

"TEC" → "Section key"  
 "JTEC" → "Key set in the section"

**If you work with Euroscale range (Version D or later), you can be interested in Pre selected package number:**

"NPR" → "Pre selected package number"

**If you work with Euroscale range (Version D or later), you can send the decrease article data needed in some specific legislation as fish legislation:**

"MER" → "Decrease in per cent"

**In Marte range scales (EcoLabel), you can indicate if price is per Kg or per 100g:**

"PRC100" → " Flag Price per 100gram (EcoLabel)"

Field is numeric. A value equal as zero indicates Price/Kg, a value different from zero indicates Price/100g, of specified article.

[Start](#)

### 4.3 Article importation using filters

If you give the command to import article, whether through command line or pressing on file to be imported, Hydra+ process is following:

- Search executable file **xmsb200.exe** in folder where Hydra+ has been installed.
- If file exists, launches it and waits until it has finished.
- Imports indicated file.

This allows following:

- If your management system has files which are not suitable with indicated, you can create an executable for adapting the files to a format that can be configured with Hydra+. This executable will be leaved on program folder, so that articles can be received.

[Start](#)

#### 4.4 Fix importation of bovine cards

For sending bovine data cards, you have to use an ASCII file in which each line will give the information of a CARD on the following format:

File	Length
Card code	Characters (values 0 to 999, according to scale model capacity)
Animal ID	10 characters
Country of birth code	3 characters
Breeding country code	3 characters
Slaughter country code	3 characters
Quarter country code	3 characters
Production country code	3 characters
R.S.I. Slaughter	10 characters
R.S.I. Quartering	10 characters
Animal category	5 characters
Animal breed	5 characters

We can generate a file "files.dat" with three fields more that complete others already existing ones:

Animal ID	10 characters
R.S.I. Slaughter	10 characters
R.S.I. Quartering	10 characters

We can generate a file "files.dat" that completes also:

Batch	20 characters
Text	25 characters

We can generate a file "files.dat" that contemplates besides:

Age	3 characters
Sex	1 character
Weight	6 characters

We can generate a file "files.dat" that contemplates besides:

Slaughter date	6 characters
Birth date	6 characters
Quartering date	6 characters

File name must be called "FILES.DAT" and must be saved on program folder.

[Start](#)

## 4.5 Total export with Hydra+

**Concept.** Hydra+ has two ways for generation of total files in ASCII mode:

- Continuous tickets files
- Configurable files

**Continuous tickets files.** There are treated with detail on chapter “ASCII Link”

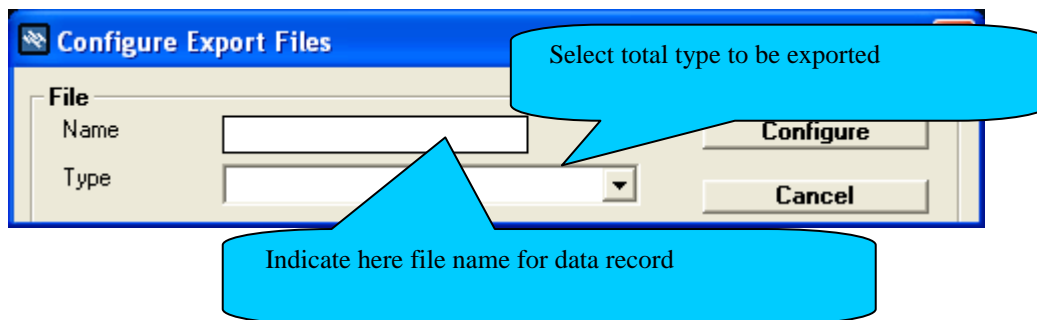
**Configurables files.** Hydra+ has the capacity to generate user configurable total data. We can generate files with:

- Total data per Salesclerk
- Total data per Section
- Total data per Articles
- Tickets headers data
- Tickets legends data
- Headers data + Tickets lines

**Configuration.** Go to options → Configure export files

It appears a form in which you can include following data:

- File name to be imported
- File type (data described before)

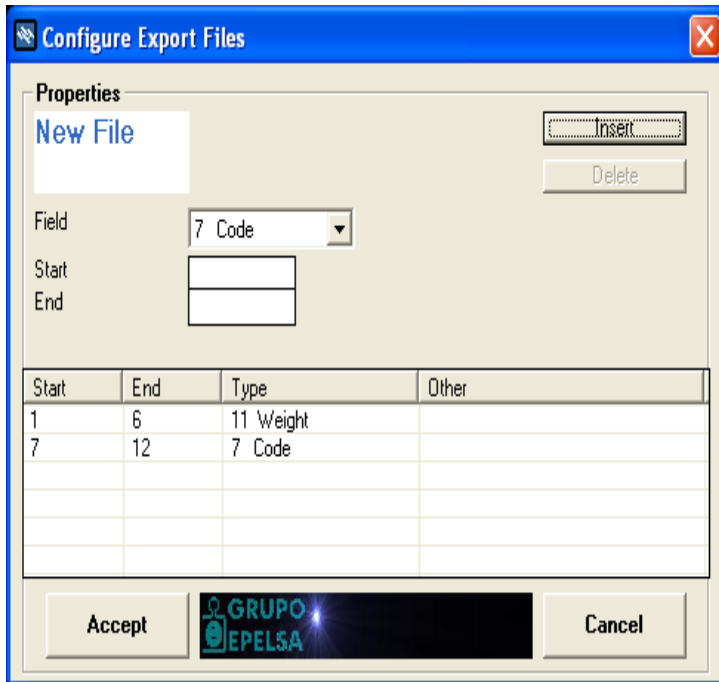


- Pressing button “configure” appears a form that give you access to the data that you will include in the file.

The generated files will be plane ASCII, one line referred to each data (or register) of the base.

You can indicate:

- Line position of the data
- Field size
- Field data



First, select the element (data), write the position in file fields “Start” and “End” and press insert. On table, you will see the already defined fields. If you select a table field clicking on it, you can delete it.

When you have finished the configuration press accept. If you want in the future to modify some data, go to export configuration and indicate file name to edit.

**Headers + lines files.** These type of files show a headers line follows from it lines, another headers line, etc.

For configuration you have to follow these steps:

- Configure a headers file , for example “head.tot”
- Configure a lines file, for example “file.tot”
- Configure headers + line file indicating files that will be taken as pattern, in this example “head.tot” and “file.tot”

**Portability.** Configuration data of file format are saved in an ASCII file with file name that we have configured, plus extension .fet. So, if we configure a file called:

Exportdat.txt

The name of your configuration file will be:

Exportdat.txt.fet

This file can be saved in folder of another program and it will work likewise.

**Common fields of all files:**

*Date* → format dd/mm/yy

*Free text* → field where we can define a fix text that will place in this position. When we configure it, we are asked to enter such text.

Amount sign → Sign to indicate if amount fields, weight, line units with data, are positive or negative (see afterward “Data format” on this chapter)

### Total export per articles

Plu	Article Plu
Descriptive	Main descriptive text of article
Counter	Section of article management
Subsection	Subsection to which it belongs
Family	Family to which it belongs
Code	Article code
Price	Article sale price
Amount	Total sold amount of article
Units	Sold units by not weighed products
Weight	Sold weight by weighted products
Weight/ Units	Shows sold weight or units according to article type
Tare	Article tare
Sell-by-date	Article sell- by-date
Operation	Number of done operations with article
VAT type	Article VAT type
Modified	Shows if price has been modified by salesclerk
Machine section	Article section machine

### Total export per section

Counter	Counter code (*)
Subsection	Subsection
Family	Family
Tickets	Number of processed tickets
Operations	Number of made operations
Weight	Processed weight
Units	Processed units
Amount	Total amount
Section machine	Number of section machine

(\*) If we have several counters associated to a section machine, It will only appear the first number of counter.

### Total export per salesclerk

Counter	Counter number *)
Salesclerk number	Number which defines the salesclerk
Name	Salesclerk name
Super total	Total positive sales+ total negative sales
Cancelled total	Total cancelled amount
Total	Total amount
Tickets	Number of issued tickets
Operations	Number of done operations
Weight	Processed weight
Units	Processed units
Cancellations	Number of cancellations
Section machine	Section machine

(\*) If we have several counters associated to a section machine, it will only appear the first number of counter.

### Ticket headers export

Ticket number	Ticket identifier
Section	Section machine where it comes from
Scale	Scale where it comes from
Salesclerk	Salesclerk who expended it

Lines number	Number of ticket lines
Cancelled lines	Number of cancelled ticket lines
Amount	Ticket total amount
Time	Ticket time (*)
Ticket state	(**)
Customers code	Customers code
Ticket type	(**)
EAN13	Barcode (***)

(\*) In V-12 machines, local tickets don't have time information and this data will be shown as "00:00"

(\*\*) See value of these data on chapter "Data bases format"

(\*\*\*) It can only be got with some barcodes. See chapter "ASCII link", in values that appear on the right we can select the barcode Fragment, so default value selects from character 1 to 13 (complete code), but if we are only interested in one part, we can indicate initial and final character.

### Ticket lines exportation

Time	Time in which ticket was used up (*)
Salesclerk	Salesclerk where it comes from
Ticket number	Ticket ID
Line number	Line number on ticket
Machine section	Machine section where ticket comes from
Code	Article code
Price	Article price
Amount	Total line amount
Weight	Sold weight on the line (Weighed articles)
Units	Sold units on the line (Not weighed articles)
Weight/units	Weight or sold units
Line type	(**)
Ticket state	(**)
Header fragment	(***)

(\*) in V-12 machines local tickets don't have time information and this data comes as "00:00"

(\*\*) See value of this data on chapter "Data bases format"

(\*\*\*) This data is only useful if you use the file to define a file of headers+ lines. It will be indicated the initial and final character of header line we want to include in ticket lines.

### Data format

By default data are generated on this way:

- Amounts, weights and units :

If they are positive, data are just shown, for example if amount length has 5 characters and amount is "4,29", the data is shown as "00429"

If data are negative, it is added a "-"(minus) at the beginning, for example "-5,21" would be shown as "-0521"

All amounts are shown without decimal point:

4,1 → "00410"

5 → "00500"

3,67 → "00367"

Weights are given in grams:

5,41 kg → "05410"



- Date and time :

Date format → “dd/mm/yy”

Time format → “hh:mm”

- We can modify this behaviour, so that prices can be shown in absolute value, that is to say, without minus sign.
- We can use two configurable signs to show Positive Amount and Negative Amount
- We can choose between several date and time formats.

To do this, go to “Options” → “Hydra+ General Configuration” → Tab “Export “ :

**Configuration**

**General**  
Euroscale  
Totals  
Currency  
Client/Server  
Automatic  
Free Commands  
Master/Slave  
**Export**

**Path**  
Path in which Files are Saved: C:\Archivos de programa\Hydra

**Configurable Exportation**

Date Format: dd/mm/yy  
Time Format: hh:mm  
Positive Price Symbol: 0  
Negative Price Symbol: 1  
 Use Absolute Values

**Export**  
 Current Day  
 All Totals

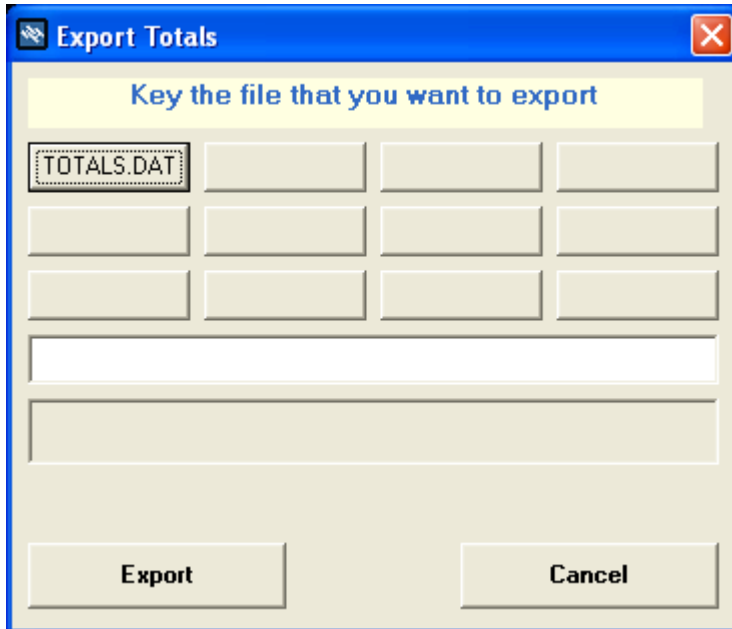
**Accept**  
**Cancel**

Here we can choose Date and Time formats, indicate if prices will have (-) sign or if they will have Absolute Values, indicate a sign for Positive Prices and a sign for Negative Prices.

We can also choose the Path where export files will be placed and if we want to export all data of base (Accumulated) or only corresponding data to current day (Diary).

### Export execution

- Of continuous tickets files:  
See chapter "ASCII link"
- Of Configurables Files  
Go to menu "Utilities" → "Export File"



Press on button which contains file name, or write it on text line and press export.

A progress bar will appear, and at the end a message indicating that export has been done.

#### TOTAL.DAT Format

At margin of configurable exportation, with Hydra+ you can also generate an export file with Fix Format, called totals.dat. This is the file format:

It contains a number of Blocks with different data:

First block: LOG of price changes and rejections:

Field information	Length in bytes
"LOG "	4
Date (DDMMYY)	6
Modification type	1
(0 → Registration	
1 → Deregistration	
2 → User modification	
3 → Scale modification	

Time (HHMM)	4
User	
Article code	
Subsection	

Section  
Retail price  
Descriptive  
Machine section

Example LOG 251202,02359,0,80810,0,1,100,Pears,1

Second Block: Tickets headers:

"CTQ " 4  
DDMMYY (date) 6  
HHMM (time) 4

Scale number

Ticket number

Salesclerk ID

EAN13 (12 digits, without check), must match with formats:

Network: 2 + Section + two digits scale + 3 digits ticket + 5 digits amount

Local: 2 + Section + (99-scale number) + 3 digits ticket + 5 digits amount

Third Block: Ticket lines

"LTQ"

Date DDMMYY

Time HHMM

Scale number

Ticket number

Salesclerk number

Sales form

PLU

Article code

Weight (in grams)

Number of operations

Amount (without decimals)

Fourth Block: Total per section

"SEC"

Section number

Subsection number

Family number

Number of customers

Number of weights

Weight in grams

Sales without decimals in Euro Cents

Fifth block: Total per article

"ART"

Date DDMMYY

PLU

Section

Subsection

Family

Code

Price

Units

Weight in grams

Amount Euro Cents  
 Tare in grams  
 Expiry (in days)  
 Machine section

Sixth block: Total per salesclerk

"SALESC"  
 Salesclerk number  
 Salesclerk name  
 Total + Total cancelled  
 Total cancelled  
 Total  
 Ticket number  
 Number of operations  
 Weight in grams  
 Number of cancellations  
 Work time in minutes (0)  
 Section number

[Start](#)

## 4.6 End of Day process

End of Day process carries out these steps:

- Collect pending totals on scales.
- Delete them from scales.

**How is, process carries out.** It can be done on three ways:

- By operator action : accessing to menu "Communications" → "Great Totals"
- If a time of automatic great totals has been configured, on "General configuration" → "Tab Automation"
- If we leave on ASCII link a file on folder "ASORDEN" called "GTOTAL.ORD".

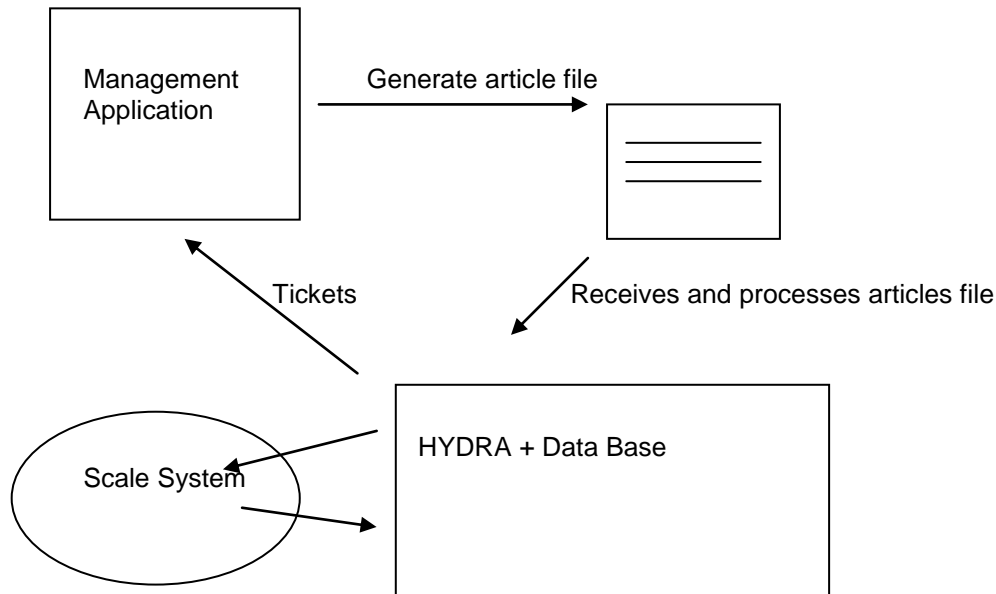
**Process step by step:**

- 1) Scales totals are collected, so as defined (sale, local...)
- 2) If it is configured, delete scale totals
- 3) If it finds a file called "end\_day.ini", export configurable files which name(s) is/are indicated inside the file
- 4) If it finds an executable called "XMSB100.EXE", generates file TOTALS.DAT, and runs XMSB100.EXE waiting until run has been finished.
- 5) If it finds a file called "end\_Day.bat", runs the execution without to wait the finalization.

[Start](#)

## 4.7 ASCII link

### Graphic Description



Management Application will send a file or several articles that will leave in program directory of HYDRA. HYDRA, in regular intervals, observes if article file(s) exist(s) and process it. Below sends file(s) data to scales and keep a copy of them in the data base.

HYDRA is receiving periodically scales tickets data. Every time when Hydra receives a ticket, leaves it in a separated file, so that Management application can recover it for it processing.

**Article files.** If it is supported by configurable HYDRA importation, article files can have any format. HYDRA can be configured to search only a concrete file or to search all configured files. If there is any priority in the import, you must know that HYDRA processes files in ALPHABETICAL ORDER.

**Modifications sending.** By default ASCII link send directly modifications as files are imported. However, we can force that is not so (articles are imported, but articles are sent to scales on demand)

“Hydra+ General Configuration” → Tab “Client/Server” → ASCII link, unmark option to send articles by files import.

**Format of tickets file name.** By default is:  
BBTTTT.DDM

BB : Scale number (00 to 99)  
 TTTTT : Ticket number (0000 to 9999)  
 DD: Month days (00 to 31)  
 M: Month in hexadecimal format (1 to c)

By access to menu "Options" → "Hydra+ General Configuration" → Tab "Client / Server", we see that there is a field to determine the file name. These values are accepted:

B : one scale digit  
 T : one ticket number digit  
 X : one mode digit, being the modes :

- 1 → Sale
- 2 → Super
- 3 → Self-Service
- 4 → Packing

S : one section digit  
 V : one salesclerk  
 C : one costumer digit

Extension will be always ".DDM"

### Export

We can two modes to generate tickets files:

- Fix Format. Described later
- Configurable format: you can define a Headers + Lines file and indicate in the configuration of ASCII link the file name you want to use.

**Tickets files format.** Each file contains the data of one Ticket. First line is the ticket header and the rest of lines are ticket lines:

Header format:

Field	Length	Type
1	1	Frame type "H" (header)
2	2	Machine section
3	2	Scale
4	4	Salesclerk
5	13	Barcode
6	3	Number of ticket lines
7	8	Amount (with decimal symbol: point ".")
8	1	Type "V"=net sale, "L" =local sale, "A"=net cancelled, "B", Local cancelled"
9	8	Date (format DDMMYYYY)
10	4	time (format HHMM)
11	8	Base amount (Without VAT), with decimal point "."
12	8	VAT Base at type 0
13	8	VAT Base at type 1
14	8	VAT Base at type 2
15	8	VAT Base at type 3
16	8	VAT Base at type 4
17	8	Amount (Base + VAT) at type 0
18	8	Amount (Base + VAT) at type 1
19	8	Amount (Base + VAT at type 2

20	8	Amount (Base + VAT) at type 3
21	8	Amount (Base + VAT) at type 4

## Lines format

Field	Length	Type
1	1	Frame Type "L" (line)
2	2	Machine Section
3	13	Barcode
4	3	Line number
5	4	PLU code
6	8	PLU unit price (with decimals)
7	7	Weight or units of the line (with decimals)
8	8	Total line price (with decimals)
9	1	Sale sign ("+"=sale, "-" return)
10	1	Article type "P" weighed, "U" units
11	1	Cancelled line ("S"=cancelled, "N" not cancelled)
12	6	Article code
13	1	VAT type (between 0 and 4)

**Barcodes format**

- HYDRA+ can generate any ticket barcode that uses following data types (see in scales manuals allow types of a concrete model) ,as long as they are SALE tickets:
  - I : Amount
  - T : Ticket number
  - V : Salesclerk
  - N : Scale
  - Y : Machine section
  - C : Article code (in self-service and packing modes)
  - P: Article PLU (in self-service and packing modes)
  - Numbers from 0 to 9

**Control possibilities.** In this type of Links, it is usually wished the less interaction between user and scale application. Therefore, Hydra+ offers possibilities to send control orders through files:

After ASCII link has been configured, Hydra+ creates a folder called ASORDEN, inside this folder we can leave these files to send orders:

Off.ord → If this file exists (whatever its contents) the program closes.

Gtotal.ord → If the file exists (whatever its contents) the program makes the day-end process (collection and/or erasure of great totals)

Export.ord → It is used to launch the exportation of one or several files of totals which previously has been configured. Hydra+ reads the file of file contents, which must contents a line for each file we want to export, indicating in each line the name of corresponding file.

For example : We have defined an export file of Great totals per article : garti.txt and other of ticket lines called glineas.txt, and we want to give the order to export both; We leave inside folder "asorden" the file "export.ord" with following contents :

Garti.txt  
Glineas.txt

Modifi.ord → Force sending of pending changes.(It is delete after sending)

Program, in regular intervals, checks the existence of these files, processing the order by free interval, so that order can take to become effective around 1 to 30 seconds. After order processing, delete the file.

### Notes about link programming

- When HYDRA finds the article file, starts from the premise that it has been finished, that is to say, nobody is writing on it at this moment (Exclusive lock), so, the Management Application don't have to create the file directly on HYDRA folder and adding data on it (which could give way to a reading error), but create it in a different folder and then makes a copy of it on HYDRA folder (for example with FileCopy on VisualBasic) which guarantees that no error occurs.
- After processing of balglo.dat, HYDRA deletes it from file system.

**Hydra+ configuration, for working in Mode ASCII Link.** Go to "Options", "Hydra + general configuration", and section "Client / Server"

- Mark box "ASCII Link".
- If you only want to import a specific file, write its name in the box "Import file". If you leave it blank, Hydra+ will search all configured files and will import them in alphabetical order.
- If you want that tickets files will be continuously generated, mark box "Create tickets files by collecting from scales"
- Note that, besides article import files, can be deposited the import file of bovine tabs "Fichas.dat".
- You have to complement the link, activating the continuous ticket collection with the wished interval, and indicate the tickets types you want to collect.

[Start](#)

## 5. FREE COMMANDS

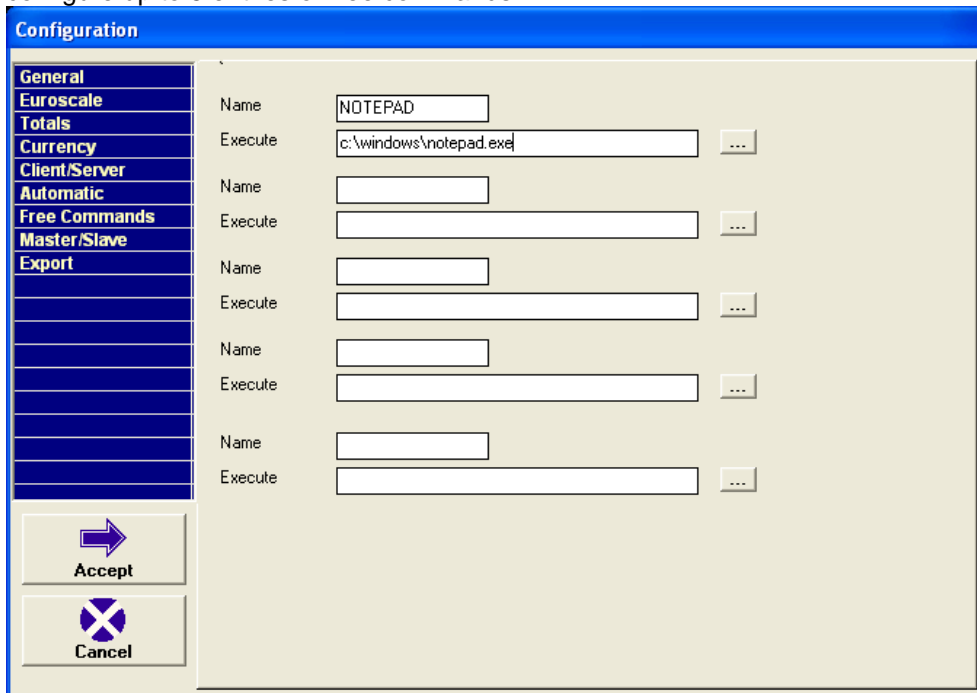
**Concept.** You may want to manage a store with very specific tasks, away from standard configuration options, for example:

- It requires that operator sends an e-mail with attached Total data at end of the day.
- It is wished to import Total data to a spreadsheet with certain format.
- It is wished that for begging of working day, the equipment connects to a remote unit to receive article data for their importation.

We can create specific BAT programs or files to execute these functions and we will have access to them from Hydra + menu.



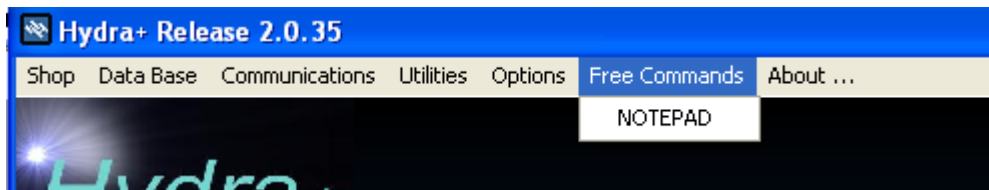
**Configuration.** Inside General Configuration menu, go to tab “Free commands”. We can configure up to 5 entries of free commands.



On section “Name”, enter a description with a maximum of 25 characters. This description will appear on Hydra+ interface.

On section “Execute” write the whole path of executable or bat file, and the from your program required parameters (Max 255 characters)

**Work with configured parameter** If you have configured free parameters, a menu option called “Free Commands” will appear. By opening it, the options that you have previously configured will appear.



[Start](#)

## 6. COMMANDS LINE

HYDRA+ enables through command line the automation of tasks and linking with management programs from costumer. HYDRA+ has some predefined commands, but as explain later on, these parameter can be modified, deleted, or can be added new ones.

### 6.1 Executable COP5.EXE and automation BAT files

HYDRA+ is a pure Win32 application, so when it is invoked from MS-DOS command line, all contact with it get lost. This implies the following:

If we create a .bat file by batch to process several consecutive orders with HYDRA+, the file will execute all orders immediately (HYDRA+ does not keep waiting on command line) therefore will be launched simultaneously several HYDRA+ requests, that will try to access simultaneously to data base and network scales, generating unpredictable failures. Executable COP5.EXE, has been created to avoid this problem. What it makes basically, is to transfer command line to HYDRA+, to run it and keeps waiting until work has been finished, so we avoid the problem.

Therefore, if your management is based on batch files, the right is to invoke program called “cop5” and never program called “hydra”.

NOTE: These executable COP5.EXE should not be confused with Epelsa application COP5.EXE for scale management. The fact that it has the same name is due to it helps the transition from COP5 to HYDRA+ of already establish management systems.

Example:

File MiOrden.bat

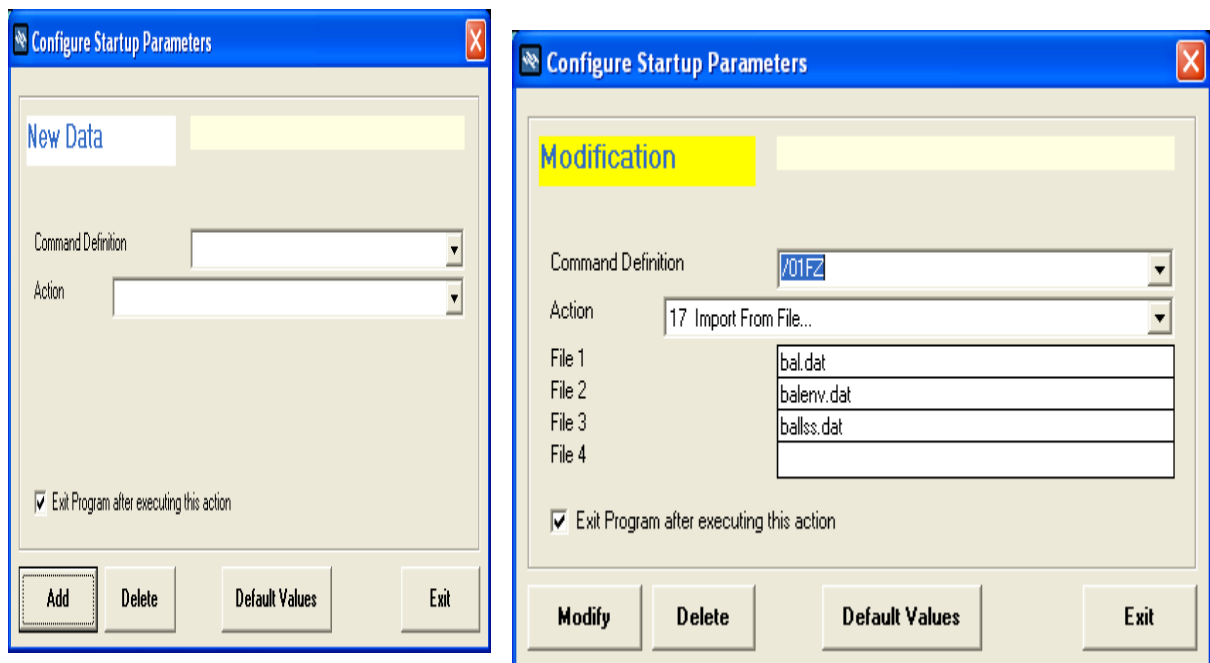
COP5 /AZ

COP5 /HZ

[Start](#)

## 6.2 Modification of Hydra+ parameter line

Inside menu “options”, we have access to menu “Configure start parameter”.



In “Command definition” you can indicate how the command from MS-DOS line will be invoked, for example /ShowArt, to run from command line, Cop5 /Showart. If you expand the combo, you can also see the commands that have been defined so far.

In “Action” you have to select which action program will execute when it is invoked with the above specified command.

If you mark box “exit program after command execution”, after indicated action is executed, HYDRA+ ends, otherwise program main screen will appear.

If you choose options “Export Totals” or “Import Articles”, some additional fields will appear in which you have to indicate which files will imported or exported. They can be up to 4, but it is not essential to fill the four fields.

Whenever you make a change, you have to press buttons "Modify" or "Add" accordingly, to validate the changes. Button "Delete" allows the erasure of a defined action. "Values by default", restores original parameter of HYDRA+. "Exit", exit the form without to save changes.

Configuration options are saved in a file called "cmdline.cfg". This file can not be edited by hand. If desired, you can copy this file to another installation. You could keep the same parameter configuration on several places.

## [Start](#)

### 6.3 Hydra+ default parameter list

"/01U"	Master Base sending, doesn't leave the program
"/01UZ"	Master Base sending, leave the program
"/01T"	Modifications sending, doesn't leave the program
"/01TZ"	Modifications sending, leave the program
"/01SECZ"	Sections sending, leave the program
"/01SUBZ"	Subsections sending, leave the program
"/01FAMZ"	Families sending, leave the program
"/01EQPZ"	Equipments sending, leave the program
"/01PAIZ"	Countries sending, leave the program
"/01VAC"	Bovine Tabs sending, leave the program
"/01ARTZ"	Article sending, leave the program
"/01PUBZ"	Advertising sending, leave the program
"/01CABLEYZ"	Headers and Legends sending, leave the program
"/01CODBARZ"	Barcodes sending, leave the program
"/01VENDZ"	Salesclerks sending, leave the program
"/01TECRAPZ"	Direct Keys sending, leave the program
"/01S"	Great Total reception, doesn't leave the program
"/01SZ"	Great Total reception, leave the program
"/01H"	Great Total reception, doesn't leave the program
"/01HZ"	Great Total reception, leave the program
"/01V"	Bovine Tabs reception, leave the program
"/VAC"	Bovine Tabs import, leave the program
"/01FZ"	Article import, leave the program: bal.dat,balenv.dat,balss.dat
"/01EZ"	Art. Import. + Modifications sending, bal.dat,balenv.dat, balss.dat
"/01F"	Article import, doesn't leave the program: bal.dat, balenv.dat, balss.dat
"/01AZ"	Article import, leave the program: bal.dat
"/01A"	Article import, doesn't leave the program: bal.dat
"/01GZ"	Article import, leave the program: balenv.dat
"/01G"	Article import, doesn't leave the program: balenv.dat
"/01JZ"	Article import, leave the program: ballss.dat
"/01J"	Article import, doesn't leave the program: ballss.dat
"/EO01"	Show screen of Counters and Equipments, leave the program
"/AR01"	Show screen of Article Configuration, leave the program
"/VN01"	Show screen of Salesclerks Configuration, leave the program
"/PU01"	show screen of Advertising Configuration, leave the program
"/CL01"	Show screen of Headers and Legends Configuration, leave the program
"/CB01"	Show screen of Barcodes Configuration, leave the program
"/TE01"	Show screen of Keys Configuration, leave the program
"/GCE01"	Show screen of Preserving Groups Configuration, leave the program
"/GCV01"	Show screen of Preserving Groups SC10, leave the program
"/PA01"	Show screen of Countries Configuration, leave the program
"/FV01"	Show screen of Bovine Tabs Configuration, leave the program
"/CP01"	Show screen of Price Changes, leave the program
"/01IVAZ"	Send VAT types
"/01EZ"	Import File (bal.dat,balenv.dat,ballss.dat)+ Modifications Sending, leave the program
"/CREA01"	Import article scale data and generate file (bal.dat)., leave the program
"/BACKUP"	Backup Multistore. Leave the program
"/01PEDINV"	Order + Stock List request. Leave the program (Euroscale, IV4TQ)
"/01PED"	Order request (Euroscale) Leave the program
"/01INV"	Stock List request (Euroscale) Leave the program
"/PTTE01"	Show screen of Tara types (EcoLabel, leave the program
"/PTLE01"	Show screen of Fix Texts (EcoLabel), leave the program
"/01TTEZ"	Sending of Tara Types ( EcoLabel ),leave the program
"/01TLEZ"	Sending of Fix Texts (EcoLabel), leave the program
"/CONSULTAxy	Article Query and insertion from scales to data base X =(0=Euroscale,1 SC10, 3 Marte IC-ILC, 4 IV4 // IV4 LCD) Y= (0=Complete, 1=Simple)

[Start](#)

## 7. SECURITY

### 7.1 Users

**Concept.** HYDRA+ allows configure users and passwords, so that user whose access to HYDRA+ interface, has the possibilities of configuration and/or communication restricted, avoiding that configuration of fundamental points of store management disappear. In this way, not authorized users will not have access to HYDRA+ interface absolutely.

**User types:**

- **admin**  
He is a special user, which always must exist. He cannot be deleted and has all permissions. From him, we can only configure the password.  
If we activate user security, the password is **drake**. We recommend change it.
- **cmdLine**  
He is a special user. User will only be activated when we execute HYDRA+ with parameters by command line. With him we can determine which permissions we from command line have. This user cannot be deleted and we cannot change his password. It is impossible to enter with this user by normal login.
- **No special users**  
They are those, we can create, give them a name and assign permissions and password. When you create them, they have the password **drake**. Change it if you want.

[Start](#)

### 7.2 Passwords and names

**Configuration.** The admissible characters for passwords and names are:

abcdefghijklmnopqrstuvwxyz1234567890

Capital letter and small letters do not be distinguished.

Maximum length for names and passwords is 8 characters.

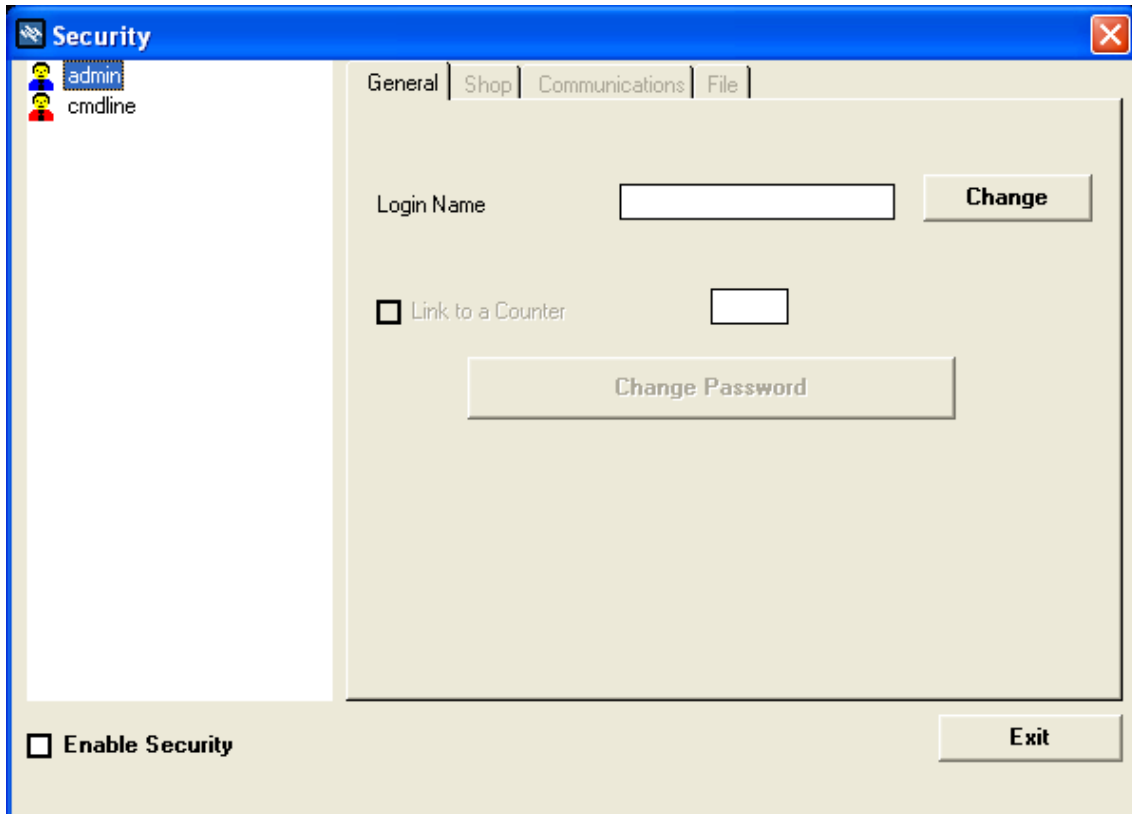
User names must have at least a no numerical character

[Start](#)

### 7.3 Security configuration

Go to security form through "Options → Security configuration"

**NOTE:** Only admin user has access to the security form.



Clicking on user on right panel you can access to:

- Change name
- Change password
- Change permissions

**Create user.** Click with right button on user list and click on context menu that appears “create user”. A new user called “userX”, with all assigned permissions, will create, where “X” is a number.

Click on newly created user and change the name if you wish, writing it in “entry name” and clicking “accept”.

Change password, clicking on “Password change” and write it in the two boxes that will appear, then click accept.

Go through the different tabs, assigning or removing permissions, whichever is applicable.

**Delete user.** Click with right button on user list and click on context menu that appears, “Delete user”.

**Edit user.** Click with left button on an existing user and change their properties.

**Activate – deactivate the security.** Click box “Work with users and passwords”. From that moment, the user security is activated. To disable, unclick it.

[Start](#)

## 7.4 Work in user security mode

If you work in this mode, starting the program appears a dialog box asking for user name and password. We will only have access to HYDRA+ interface, filling correctly these two data and clicking "Accept". If you click cancel, the program ends.

**Note.** There are two exceptions in this rule:

- If we work from command line, program execute corresponding command with permissions that are assigned to special user "cmdline"
- If option "iconify at start" is activated, program starts and remains iconified. By clicking on the icon, we are asked for user and password, and we have access to the interface with the indicated user permissions.

**Additional notes:**

- **admin**

Only **admin** user has access to configuration of passwords and commands line.

Password file calls "pass.sec" and is transportable, that is to say, we can create it in one HYDRA+ installation and copy it in other installations of Hydra+.

The edition of "pass.sec" by hand, leave the system unusable so far as "Hydra.ini" and "pass.sec" are deleted. This will give a track to the administrators that it was tried to access with security brake.

The user security can only be deleted from the security form; try to do this deleting passwords file or HYDRA.INI file, will leave the system unusable, and can only be restored by erasure of "Hydra.ini" and "pass.sec"

Try to enter as user without success, erasure of hydra.ini or erasure of pass.sec, are marked as an entry in file loghydra.txt

[Start](#)

## 8. DATA BASES

### 8.1 Totals

**Format of ticket headers**

There are two separates tables:

"Header" → It contains the headers from Euroscale equipments

"HeaderSC10" → It contains the headers from V-12 equipments connected to SC10

Both have the same format with the following data:

FIELD	FORMAT	DESCRIPTION
NUME	Text	Number of ticket
SECTION	Text	Section from where it comes
SCALE	Numeric	Scale from where it comes
SELLER	Text	Salesclerk who generated it
NUMLIN	Text	Number of ticket lines
LINCAN	Text	Cancellled ticket lines
AMOUNT	Numeric	Total ticket amount
TIME	Text	Time of ticket generation
ONOFF	Text	Informative(text "Net" o "Local")
STPETIC	Text	Ticket status
CODCLI	Text	Costumer for whom ticket was generated
DATE	Text	Ticket date
TYPTIC	Text	Ticket type
BARCOD	Text	Barcode
RESERV1	Text	Reserved
RESERV2	Text	Reserved
RESERV3	Text	Reserved

**NUME** : 5 digits are stored. (00001 to 99999)

**DATE** : format dd/mm/yy

**TIME** : format hh:mm:ss, on SC10 tickets, in local appears as 00:00:00, even though they don't return time information.

**BARCOD**: Barcode can only be generated in certain circumstances (see ASCII link chapter), in other case appears blank.

**AMOUNT** : It is stored with decimal point.

**STPETIC** : Field that indicates ticket state, Its values can be from 0 up to 255 (one byte), being the numerical values following :

BIT least significant → "1" Local ticket, "0" Net ticket

2 → a "1" Order ticket

3 → At moment without use

4 → At moment without use

5 → At moment without use

6 → At moment without use

7 → "1" Cancelled ticket

BIT most significant → At moment without use

So for example, a normal closed, net sell ticket would have code STPETIC 16, a local ticket of same type would have 17, a cancelled net ticket would be 64.

**TYPTIC** : Field to indicate ticket mode :

1 --> Roll (sale) and in the case of SC10 also Super mode

2 --> Super (only Euroscale)

3 --> Packing

4 --> Self-Service

5 --> Local Roll (sale) and in the case of SC10 also Super mode

6 --> Local Super (only Euroscale)

7 --> Local Packing

8 --> Local Self-Service

#### **Format of tickets lines**

There are two separate tables:

**tickets** → It contains the headers from Euroscale equipments

**ticketsSC10** → It contains the headers from V-12 equipments connected to SC10

Both have the same format with following data:

FIELD	FORMAT	DESCRIPTION
DATE	Text	Ticket date
TIME	Text	Time of ticket generation
NUMBAL	Numeric	Scale number from where it comes
VENDOR	Text	Salesclerk who generated it
NUME	Text	Ticket number
NUMLIN	Text	Line number on ticket
SECC	Text	Section
PLU	Text	PLU of sold article
CODE	Text	Code of sold article
ITEM	Text	Descriptive of sold article
VAR	Text	Without use at moment, reserved
PRICE	Numeric	Sale article price
AMOUNT	Numeric	Line amount
WEIGHT	Numeric	Line weight
UNITS	Numeric	Line units
STPETIC	Text	State (see headers)
CODI_PES	Text	Without use at moment, reserved
LINCAN	Text	Flag of cancelled line
IVA	Numeric	VAT type of sold article

TYPTIC	Text	Ticket type (see headers)
RESERV1	Text	Reserved
RESERV2	Text	Reserved
RESERV3	Text	Reserved

**STPETIC, TYPTIC:** Correspond to header from where ticket lines come.

**RESERV1:** In packing mode and where applicable, saved number of bovine tab that correspond to article.

**LINCAN:** If line is cancelled, value is "1", and if it is normal value is "0"

**PLU, CODE, VAT:** If article is not recognized (direct sale by weight or units without to indicate article code), values are 0

**ARTICLE:** If article is not recognized (direct sale by weight or units without to indicate article code), value is blank.

**NUME:** 5 digits are stored. (00001 to 99999)

**DATE:** format DD/MM/YY (corresponds to its header)

**TIME:** format HH:MM:SS, on tickets SC10 in local appears as 00:00:00 being that they don't return time information (corresponds to its header)

### Total format per Article

Table GTARTI: save daily totals per article

FIELD	FORMAT	DESCRIPTION
MODE	Numeric	Total mode
DATE	Date/Time	Total date
PLU	Numeric	Article PLU
DES_PLU1	Text	Descriptive
CODI_IDENT	Numeric	Counter
CODI_SUB	Numeric	Subsection
CODI_FAM	Numeric	Family
CODE	Numeric	Code
PRICE	Numeric	Article price
UNITS	Numeric	Sold units
WEIHGT	Numeric	Sold weight
EURO	Numeric	Amount
TARE	Numeric	Article tare
EXPIRATION	Numeric	Article expiration
OPERATION	Numeric	Operations
VAT TYPE	Numeric	Article VAT type
MODIFIED	Booleano (Yes/No)	Scales modified price
SCAL_SECT	Numeric	Source machine section

**MODE** for the same article can be up to 4 registers:

- 1 → Sale (and in SC10 mode super)
- 2 → Super (only Euroscale)
- 3 → Packing
- 4 → Self-Service

**MODIFIED:** If article price which comes from scales is different as price of internal Hydra+ base, TRUE will be marked. In other case FALSE is good.

**PLU, CODE, DES\_PLU1:** Code 0, PLU 0 are reserved for direct sale by weight or units (without code or PLU), in this case the descriptive will be indicated as " Various..." , in this case VAT type will be also indicated as zero.



**Total format per section**

Table GTSECS: saves daily totals per section.

FIELD	FORMAT	DESCRIPCIÓN
MODE	Numeric	Sale mode (see totals per article)
DATE	Date/Time	Total date
CODI_IDENT	Numeric	Counter
CODI_SUB	Numeric	Subsection
CODI_FAM	Numeric	Family
TICKETS	Numeric	Number of expended tickets
OPERACIÓN	Numeric	Operations
WEGIHT	Numeric	Expended weight
UNITS	Numeric	Expended units
PESETAS	Numeric	Expended amount
SECC_MAQUI	Numeric	Scale section

There is a different entry for each different section + Subsection + Family (that is to say, main key is Date + Mode + Section + Subsection +Family).

For direct sale articles by weight or units (without code or PLU), section is that where ticket comes and subsection and families are 0 (cero).

**Totals Format per salesclerk**

GTVEND: Totals per salesclerk

FIELD	FORMAT	DESCRIPCIÓN
MODE	Numeric	Sale mode (see totals per article)
DATE	Date/Time	Total date
CODI_IDENT	Numeric	Counter
IDENT_VEND	Numeric	Salesclerk code
NAME	Text	Salesclerk name
SUPERTOT	Numeic	Total Sold + Total Cancelled
TOTCANCE	Numeric	Total cancelled
TOTAL	Numeric	Total sold
TICKETS	Numeric	Number of expended tickets
OPERACIÓN	Numeric	Number of operations
WEIGHT	Numeric	Expended weight
CANCEL	Numeric	Number of cancellations
TIME	Numeric	Actually without use (Reserved)
UNIT	Numeric	Expended units
PESETAS	Numeric	Expended weight
DESEMBOLSO	Numeric	Actually without use (Reserved)
REEMBOLSO	Numeric	Actually without use (Reserved)
IMPOR_NEG	Numeric	Negative amount (Low range)
CREDITO	Numeric	Actually without use (Reserved)
SECC_MAQUI	Numeric	Scale section

[Start](#)

## 8.2 Articles

### Format of articles table

- This table contains the article data to be sent to the scales.
- Notice that Hydra+ don't accept null values, so, if a text field has to be blank, and you want to create yourself a registration, fill it with blanks. If a value is numeric, fill in it with by default appropriate values.
- Table has no used fields, reserved for future uses. Don't select anything of these fields if you want to enter a new registration.
- In obligatory data, which don't accept value by default, it indicate " Fill in always"
- In this description are currently used data described.

Data of article store location:

NAME	TYPE	DESCRIPCIÓN	DEFAULT VALUE
CODI_IDENT	NUMÉRICO	Counter	(fill in always)
SECC_MAQUI	NUMÉRICO	Scale section	(fill in always)
CODI_SUB	NUMÉRICO	Subsection	0
CODI_FAM	NUMÉRICO	Family	0
PLU	NUMÉRICO	PLU	(fill in always)
CODE	NUMÉRICO	Article code	(fill in always)

Article data:

NAME	TYPE	DESCRIPCIÓN	DEFAULT VALUE
CODI_PES	Text	Weighed (W) or Not W weighed(U)	
TIPO_IVA	NUMÉRICO	VAT type IVA 0-4	0
PRC100G	YES/NO	Price/100 gram (EcoLabel)	FALSE
PRECIO	NUMÉRICO	Price currency no Euro	0
USATRAMOS	YES/NO	Price flag by steps	FALSE
EUROS	NUMÉRICO	Price Euro (retail price)	0
ETQ	NUMÉRICO	Label	255
PREF	NUMÉRICO	Best-before	0
CADUCIDAD	NUMÉRICO	Sell-by date	0
TARA	NUMÉRICO	Tare	0
TIP_LET1	NUMÉRICO	Font text 1	0
TIP_LET2	NUMÉRICO	Font text 2	0
TIP_LET3	NUMÉRICO	Font text 3	0
TIP_LET4	NUMÉRICO	Font text 4	0
TIP_LET5	NUMÉRICO	Font text 5	0
TIP_LET6	NUMÉRICO	Font text 6	0
TIP_LET7	NUMÉRICO	Font text 7	0
TIP_LET8	NUMÉRICO	Font text 8	0
TIP_LET9	NUMÉRICO	Font text 9	0
TIP_LET0	NUMÉRICO	Font text10	0
DES_PLU1	TEXT	Main descriptive	""
DES_PLU2	TEXT	descriptive 2	""
DES_PLU3	TEXT	descriptive 3	""

DES_PLU4	TEXT	descriptive 4	""
DES_PLU5	TEXT	descriptive 5	""
DES_PLU6	TEXT	descriptive 6	""
DES_PLU7	TEXT	descriptive 7	""
DES_PLU8	TEXT	descriptive 8	""
DES_PLU9	TEXT	descriptive 9	""
DES_PLU0	TEXT	descriptive 10	""
DES_PLUX	TEXT	descriptive 11	""
DES_PLU11	TEXT	descriptive 12	""
DES_PLU12	TEXT	descriptive 13	""
DES_PLU13	TEXT	descriptive 14	""
DES_PLU14	TEXT	descriptive 15	""
DES_PLU15	TEXT	descriptive 16	""
DES_PLU16	TEXT	descriptive 17	""
DES_PLU17	TEXT	descriptive 18	""
DES_PLU18	TEXT	descriptive 19	""
DES_PLU19	TEXT	descriptive 20	""
DES_PLU20	TEXT	descriptive 21	""
ART_CB	TEXT	EAN13 article code	""
GRUPO_CONSERV	NUMÉRICAL	Preservation group	0

Don't modify system control data directly, program must do this. By register creation or modification, insert always the default values:

NAME	TYPE	DESCRIPCIÓN	VALUE BY DEFAULT
TRAN_PLU	TEXT	Flag sended to Scales (Euroscale)	""
TRAN_PLUSC10	TEXT	Flag sended to Scales (V-12)	""
TRAN_EN	TEXT	Flag sended to Scales (V-8)	""
TRAN_EL	TEXT	Flag sended to Scales (Eco Net)	""
TRAN_EP	TEXT	Flag sended to Scales (EcoPrint)	""
TRAN_TEXTO	TEXT	Flag sended to Scales	""
TRAN_TEXTOSC10	TEXT	Flag sended to Scales	""
TRAN_TEXTOEL	TEXT	Flag sended to Scales	""
TRAN_TX1	TEXT	Flag sended to Scales	""
TRAN_TX1SC10	TEXT	Flag sended to Scales	""
TRAN_CB	TEXT	Flag EAN13 sended	""
TRAN_CBSC10	TEXT	Flag EAN13 sended	""
PRC3	NUMBER	Last updating	ddmmyyhmm
BORRADO	YES / NO	Flag of selected article to delete	FALSE
BALENV	YES / NO	Flag to force a sending to all systems	FALSE

**Important.** To delete an article, don't delete the registration, instead of that, select flag "ERASURE" to "YES" (True), and let fields "TRAN" in blank (""), leaving all other data without change. This allows Hydra+ to send erasure order to scales. Hydra+ will delete the registration when erasure is effective in the scale. In other case, scales will not be notified of article erasure.

**IN SIMPLYEST CASE, WITHOUT SUBSECTIONS AND FAMILIES is enough** to insert registrations in article table. However, if you use subsections and/or families, you must also create the corresponding data in families and subsections tables.

[Start](#)

### 8.3 Structure

**Subsections table format**

It calls "SUBSEC". In it we have to deposit an entry for each section inside the table.

Example: The system sections are 1, 2 and 3

On 1 are articles from subsection 1 and 12

On 2 are articles from subsection 1, 5, and 12

On 3 are articles from subsection 5

In this table we have to create:

Section 1 Subsection 1  
 Section 1 Subsection 12  
 Section 2 Subsection 1  
 Section 2 Subsection 5  
 Section 2 Subsection 12  
 Section 3 Subsection 5

That is to say, for each section, all subsections of it.

CODI\_IDENT : COUNTER NUMBER OR MANAGEMENT SECTION

CODI\_SUB : SUBSECTION NUMBER INSIDE SECTION

TRAN\_SUB : TEXT, LEAVE WITH VALUE ""

ERASURE : BOOLEANO, LEAVE AS "FALSE"

The rest of fields are reserved for future use.

**Table format of families**

For each section and subsection, we have to create a family, that is to say:

We have section "15", which has two subsections "3" and "7", and they have articles from families "1" "3" and "5", In table of families we have to create:

Section 1	Subsection 3	Family 1
Section 1	Subsection 3	Family 3
Section 1	Subsection 3	Family 5
Section 1	Subsection 7	Family 1
Section 1	Subsection 7	Family 3
Section 1	Subsection 7	Family 5

It calls "FAMILY" and has these fields:

CODI\_IDENT: Counter or management section

SECC\_MAQUI: Section machine

CODI\_SUB: Subsection

CODI\_FAM: Family number

TRAN\_FAM: TEXT, leave as ""

ERASURE: Booleano, leave as "FALSE"

\* If in your system, you don't use Subsections, leave always value CODI\_SUB as zero.

[Start](#)

## 9. SUMMARY OF CONFIGURATION OPTIONS AND THEIR USE ACCORDING TO SCALES TYPES.

### 9.1 General options (all models)

General → Company name: It is which is shown in total listing per printer.

General → Euroscale equipments: Activates/Deactivates all communication options with ranges Euroscale, Mercurio and Jupiter.

General → V-12 equipments: Activates/Deactivates communication with range V-12, series CB, RL, RLSS, etc, through hubs SC10 or C9/C10

General → V-8 Net: Activates/deactivates communications with V-8 scales

General → EcoLabel/Net Net: Activates/deactivates communications with Marte networks (can be connected together)

General → IV4 / EcoPrint: Activates/deactivates communication with these scales (IV4 models CE, STD, or TQ, and EcoPrint scales)

General → Reject articles with price zero: If we activate this option, it will not allow to program article data with zero price either by file import or user interface.

General → Communicate through modem: It will establish communications through Modem, only one system type is simultaneously allowed ((Euroscale, V-12...).Communication options through MODEM are valid over all indicated in configuration of the different ranges.

General → Communicate through remote gateway: Communications are routed through a TCP/IP remote server. Apart from this configuration, we have to indicate all parameters of each range, which will be relayed to the remote server.

General → Remote screens

Automation → All options.

Master/Slave → All options, however we will only take real advantage of this feature in Euroscale through TCP/IP

Export → All options

Modem → All options, However MODEM speed should be 9600 bps, both for V-12 connected to C9/C10 and for IV4TQ, and 2400bps for IV4CE, IV4STD, V-8, EcoPrint, EcoLabel and EcoNet.

[Start](#)

### 9.2 Options only for ranges Euroscale, Mercurio or Jupiter

Euroscale → Connection type: indicate how to connect with Server scale, through TCP/IP or RS-232. This configuration isn't valid if we work via MODEM.

Euroscale → Order / Stock list \_ order options / stock list only for Euroscale machines. Don't confuse in any way with order/ IV4TQ stock list, as these options don't affect these machines.

Euroscale → Version 9 and later: options to configure depending of Euroscale program version and working needs.

Euroscale → Special label: articles that belong to special family will have the send label number.

Totals → Section marked with text "EUROSCALE" → indicate, exclusively for this type of scales, ticket types we want to receive and the possibility to delete totals at end of the day and restart or not ticket numbering.

[Start](#)

### 9.3 Options only for ranges V8 and Marte

The options of communication configuration for these ranges are given by two ways:

→ By direct communication via RS-232, the communication is to 2400 bps, N, 8, 1. Port has to be indicated by counter configuration (select port COM or option "not communicate").

→ By work via modem, this counter option has no effect and is executed in section MODEM of General Configuration".

### 9.4 Options only for ranges IV4 and ecoPRINT

Options indicated on tab IV4/EcoPrint. Port COM is only valid through RS-232. Through MODEM, we will use indicated modem configuration.

[Start](#)

### 9.5 Options limited to some scales types

General → Use preserving groups:

Only valid for Euroscale, V-12 with hub SC10 and EcoLabel.

Totals → Continuous tickets reception:

Only valid for Euroscale and V-12 SC10 connected via RS-232

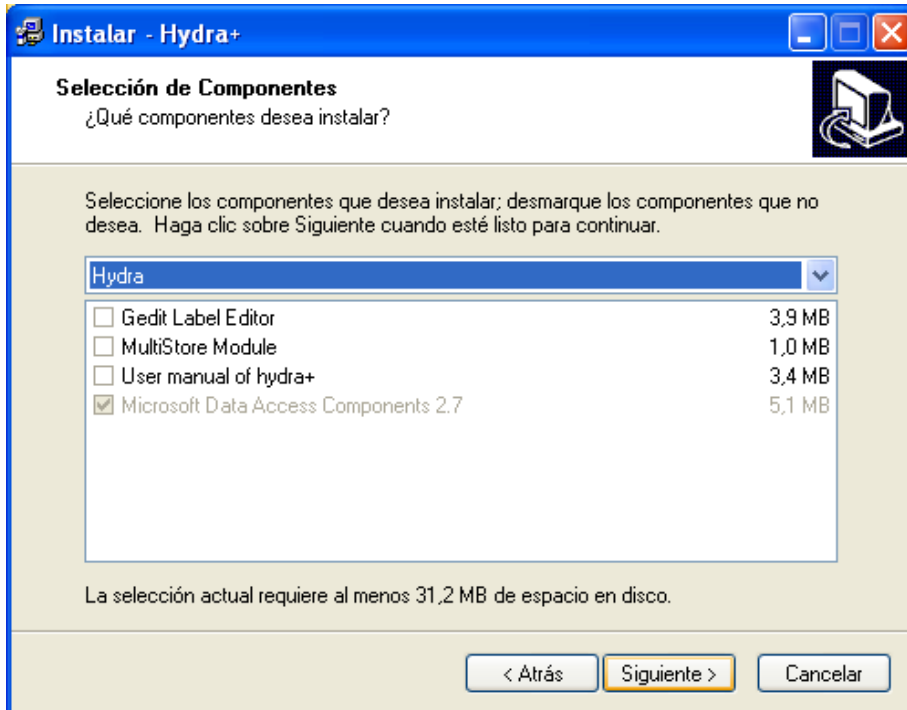
Totals → Absorb price changes coming from scales

Only valid for Euroscale, V-12 with C9/C10, and V-12 with SC10 (no network path)

Client/Server → ASCII link → This link type is only viable for Euroscale machines or V-12 machines connected to a SC10 via RS-232.

## 10. INSTALL OPTIONS

During installation, you will find the step "Select Components", in which you have several options:



1º) "Euroscale – Label Editor Gedit - Label Editor Gedit" → Installs together with Hydra+, program "Gedit", which is a Label editor for EUROSCALE machines. If you are interested to create personalized labels and tickets for these machines, select the option. If you don't use Euroscale machines or you prefer to have GEDIT as an independent program, don't select it.

2º) "EcoLabel – Label editor Gedit - Label editor" → It is a program specialized in label configuration of ECOLABEL machines. Install it only, if you use this type of machines.

3º) "Multi-Store module "→ Hydra+ can works with only a database (only one store) or to manage uniformly a group of stores (Multi-Store). Select this option only if you need to work from the central with several stores. Note, that due to its own philosophy, "Multi-Store" has a more rigid working way with fewer options as "One-Store", so it is not appropriate for all cases.

[Start](#)

### ANNEX 1. STEP MULTI-STORE -- ONE-STORE

- If you have installed a multi-store system and you only need one store system. Go with explorer to folder where you have installed Hydra+. Search and delete file HYDRAMULTI.EXE  
Search and, if exists, delete file HYDRAMULTI.INI  
Search and, if exists, delete file PASS.SEC  
Run the program that will ask you for the general configuration.  
Create the wished configuration (communications, links...)  
And you can work now with one store system.

If you besides had a created store with data:

Search a folder with name TXX, where XX are the digits with the store number you had created, for example: T01, T02 ...

Select from this folder file "dbase.mdb" and copy it to root of Hydra+ installation, overwriting if necessary, the from Hydra+ created by default after starting at first time as one-store system.

- If you have a one-store system, that you want to change into a multi-store system. Make a multi-store installation in other folder, different from current folder. Run this new version and after you have configured it, create a new store which meets the type you wish (Euroscale, V-12...)  
Once created, copy from old one-store installation file "dbase.mdb" to folder "TXX" in new installation, where XX is store number you have created, for example, T01, T02 ...  
You have now the data on this store.

[Start](#)

## ANNEX 2. COMMONS PROBLEMS

→ BY PROGRAM START APPEARS MESSAGE "SECURITY VIOLATION": User security system of Hydra+ includes two files: hydra.ini and pass.sec. In one-store systems, if only exists one of them or one of them has been manipulated improperly, either by an intentional action or system failures, indicated message appears. To restore the situation, delete the two files or existing one of both (you can also, instead to delete it, to cut it to another folder to restore it after the first normal start of Hydra+).

→ BY PROGRAM START APPEARS MESSAGE "TEST OF DATA BASE ACCESS", OR NO INTERFACE IS SHWON AND DOES NOT WORK: Databases can be damaged by incorrect handling or by power supply failure during writing in them. In this case, a recent back up must be restored.

→ PROGRAMM WORKS GOOD, BUT FAILS SHOWING LISTINGS: In some installations, libraries are not registered correctly the first time. Repeat the installation and restart the system.

→ BY COMMUNICATION WITH EUROSACLE, SOME MESSAGES, AS ARTICLES, BOVINE TABS OR TOTALS DON'T COME CORRECTLY. Check on chapter of this manual about Euroscale machines configuration, that the indicated options correspond with scale program version you have. Last Euroscale versions have more options and their communication protocols have been checked to accept new data, living rise to these problems if program is not configured adequately.

→ DON'T RECEIVE EUROSACLE TOTALS IN SPITE OF TO HAVE OPTIONS SELECTED: Check that scale options accumulate totals and tickets of indicated types are selected.

→ SEEMS THAT START PARAMETER OF COMMAND LINE DO NOT WORK: if you work with multi-store, you have to indicate in the parameter you use or create the digits of store number. Check that it is so. Other parameters, as ticket receipt, are only valid for certain types of scales. Check too, going to "Configuration of start parameter", that the wished parameter really exist.



[Start](#)**ANNEX 3. COMMON PROBLEMS IN EUROSCALE VIA TCP/IP****IP address and mask**

For communicate with Server scale, scale must have both, a defined IP address and a defined mask. Likewise, it must have option "TCPIP" in "ON" value.

→ If you don't know which address to assign:

- It is possible that you make the installation in a center where an Ethernet network is already established. In this case, you have to follow system administrator instructions or the instructions of person in charge for this network. To indicate random IP addresses can be against the security system established in this company.
- If center don't have net or TCP/IP established politic, follows these advices :
  - If connection will establish by remote way (for example ADSL, RDSI, etc) you must study the possible addresses consulting a person in charge of the center, being that Internet access provider fixes these addresses and don't accept modifications.
  - If you want to install a new Ethernet local network, please use addresses of type "192.168.000.XXX" with mask "255.255.255.000", because these are from international organisations reserved for internal local use, giving go-head for the future installation of other products as ADSL networks without interference or problems with current installation. Other addresses we can use are 10.X.X.X with mask 255.0.0 and range of addresses from 172.16.x.x to 172.31.x.x with mask 255.255.0.0

→ If you cannot communicate:

- Check on the scale that the option TCP/IP is "ON" and that Hydra+ is also activated.
- Check that indicated port (by default 6000) is the same in the scale and in Hydra+.
- Check that mask (for example 255.255.0.0) is exactly the same in the scale and in the equipment with Hydra+ (for Windows 95, 98 and Me, you can use command winipcfg, and for Windows NT, 2000 and XP the command ipconfig)
- Check that pair IP / Mask is compatible in scale and computer. So, the IP address in which the mask is not zero, must be equal in both equipments. For example :

Computer → 192.168.0.1 mask 255.255.255.0  
 Scale → 192.168.0.2 mask 255.255.255.0

It is correct, because in the part of the mask that is not zero (255.255.255), the IP address is the same (192.168.0)

Computer → 192.168.0.1 mask 255.255.255.0  
 Scale → 192.168.1.2 mask 255.255.255.0

It is wrong ,because in the part of the mask that is not zero (255.255.255), the computer IP address "192.168.0" is different as in the scale "192.168.1"

- Using HUBS or SWITCHS, the scale is prepared to detect automatically the speed (10 Mb/s or 100 Mb/s). However, some manufactures of HUBS and SWITCHS don't implement in their products the necessary protocols for the detection. In this case, we must change the scale from "AUTO" mode to mode "10" or "100" as appropriate with HUB or SWITCH.
- In some Windows configurations, whenever a programm calls to an IP address, system tries to connect to internet, appearing Windows screen of netz connection and connection fails. Start program "Internet Explorer", and in its configuration options (depend of Internet Explorer version), search option where it is configured to dial allways netzs connections

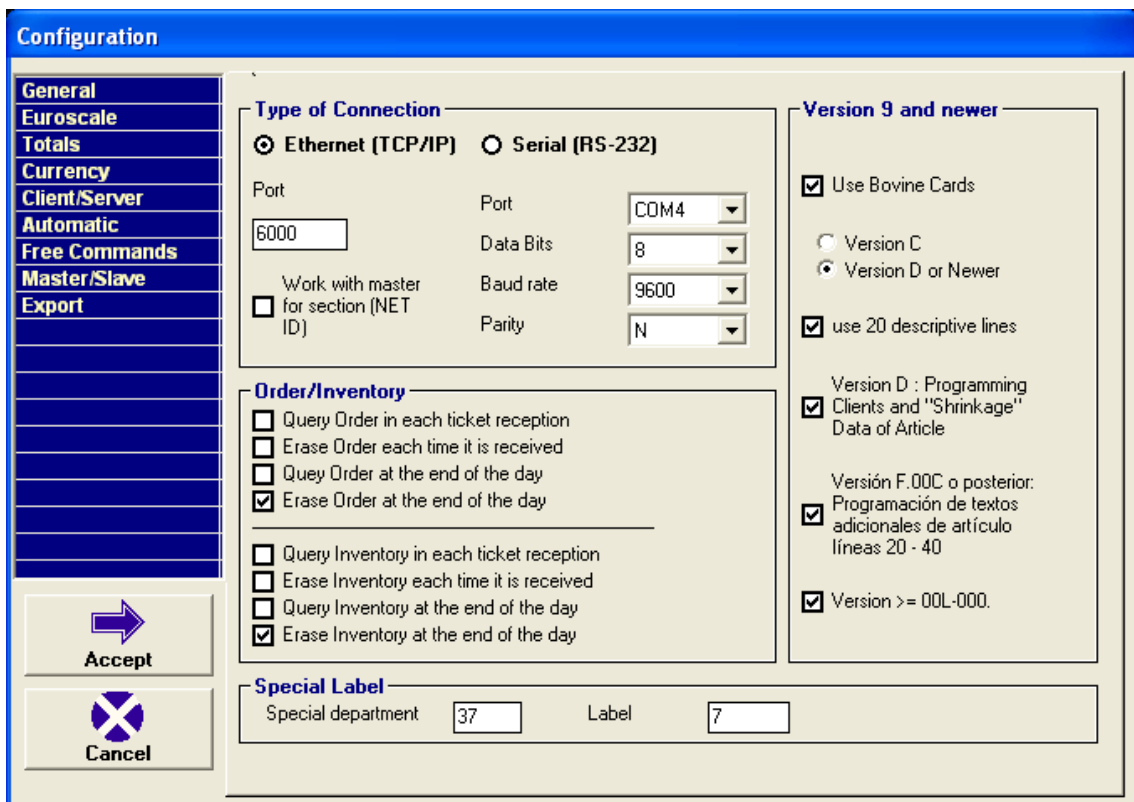
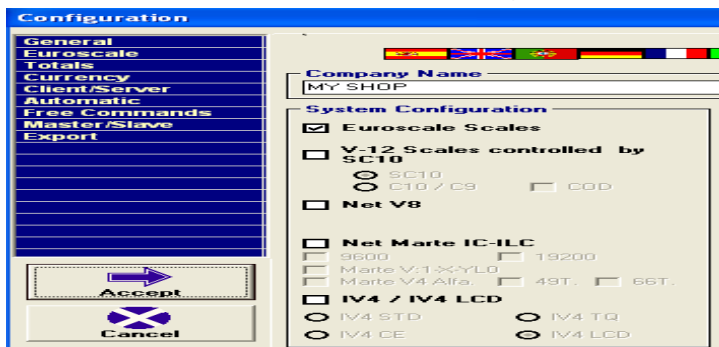
automatically. Change value to " Never dial", save the configuration, restart the program and try communication again.

- The IP address has to be unique for each equipment (computer or scale) of Network. If there are two equipments with the same IP address, we can get random failures. So, it is possible that a ping works but with a very long wait time, sometimes works, sometimes doesn't work or the communications work but they break very frequently and capricious.

[Start](#)

**ANNEX 4. Typical configurations**

Euroscale,Mercurio and Jupiter ranges



### Marte Range

**Configuration**

**General**  
**Currency**  
**Client/Server**  
**Automatic**  
**Free Commands**  
**Master/Slave**  
**Export**

**Company Name**  
MY SHOP

**System Configuration**

- Euroscale Scales
- V-12 Scales controlled by SC10
  - SC10
  - C10 / C9
  - COD
- Net V8
- Net Marte IC-ILC
  - 9600
  - 19200
  - Marte V:1-X-YLD
  - Marte V4 Alfa.
  - 49T.
  - 66T.
- V4 / IV4 LCD
  - V4 STD
  - IV4 TQ
  - V4 CE
  - IV4 LCD

**Accept**

**Cancel**

Marte V4 IC/ILC Range

Marte V4 Alphanumeric  
12 V4 Alfa.